

# NEWSLETTER



## PRODUCT NAME AND SPECIFICATION ADJUSTMENT – EFFECTIVE IMMEDIATELY

Dear Distributor Partners,

Thank you for your continued support of the SEAL series.

We would like to share the following updates regarding this product line:

First, we are pleased to introduce two new models in the SLIM series: **Slim 9.5rsi TE** and **Slim 12.5rsi TE**. With the integrated design of the control box and motor, the overall size of the winch is significantly reduced, making low-profile installation much easier. Please refer to the attached sales kit for detailed specifications and features.





Next, following the recommendations provided by the International 4 Wheel Drive Trainers Association (I4WDTA), and in order to ensure that the synthetic rope can be fully wound onto the drum while still leaving sufficient clearance between the outermost layer and the tie bar to avoid interference, we will be implementing the following adjustments to the product names and specifications of the listed models:



The changes are limited to the following aspects:

Item	Before	After
<b>PN &amp;Product Name</b>	295020 Seal Slim 9.5	unchanged <b>Slim 9.5</b>
	295014 Seal Slim 9.5s	unchanged <b>Slim 9.5s</b>
	295053 Seal Slim 9.5rs	<b>295135</b> <b>Slim 9.5rs TE</b>
	295042 Seal Slim12.5	unchanged <b>Slim 12.5</b>
	295037 Seal Slim 12.5s	unchanged <b>Slim 12.5s</b>
	295059 Seal Slim 12.5rs	<b>295114</b> <b>Slim 12.5rs TE</b>
<b>Rope Length</b>	9.5/12/5	unchanged
	9.5s / 9.5rs TE: 30.5 m	<b>From 30.5 to 23.2 m</b>
	12.5s / 12.5rs TE: 25 m	<b>From 25m to 21 m</b>
<b>Hook Type</b>	9.5/9.5s/12.5/12.5s	unchanged
	9.5rs TE/12.5rs TE	<b>From Sling hook to bosshook</b>
<b>Pricing</b>	9.5/9.5s/12.5/12.5s	unchanged
	9.5rs TE/ 12.5rs TE:	<b>adjusted due to BossHook</b>

To Learn more about this, you're always welcome to contact us any time.

# COMEUP WINCH

## Slim 9.5



**PN: 295020 / 12V**  
**w/Wire Rope & roller fairlead**

### Features Include

- 12V DC severe duty winch rated at 9,500 lb pulling meets or exceeds your expectations.
- Heavy duty series wound motor equipped with thermal switch alters when motor over-heating.
- 16 equally positioned pin holes with a stainless steel ergonomic T-handle make it possible to reposition in 22.5 degree Increments.
- Water-proof remote control with thermometric LED indicator w/5 m cord
- Tough aluminum die cast housings withstand strength of 2.0 x rated load of winch
- The U.S. Germany, U.K. France, etc patented mechanical cone brake outside the drum expedites heat dispersion. The greater the load on the rope, the greater amount of braking is generated by the mechanism.
- Meet SAE J706, CE Machinery Directive 2006/42/EC and CE Electromagnetic Compatibility Directive 2014/30/EU.

### Specifications

Rated line pull:	4,309 kg ( 9,500 lb ) single line
Line speed ( 1st layer):	14.5 mpm / 47.6 fpm 60 A at 12V no load 2.1 mpm / 6.8 fpm 380 A at 12V full load
Motor:	3,730 w / 5.0 hp 12V series wound
Gear ratio:	3-stage planetary 159:1
Clutch (freespooling):	Rotating ring gear
Brake (outside the drum):	Automatic, full load cone brake
Winch construction:	Aluminum die cast housings with steel drum
Drum size:	63.5 x 227L ( 2.5" x 8.9"L )
Control:	Waterproof remote with thermometric indicator LED w/ 5 m cord
Rope:	Galvanized aircraft A7 x 19 wire rope
Size:	8.7 mm x 30.5 m (11/32" x 100')
Mounting bolts pattern:	254 x 114 mm ( 10" x 4.5" )
Mounting:	Foot forward or foot down mounting workable
Finish:	Matte black powder-coated

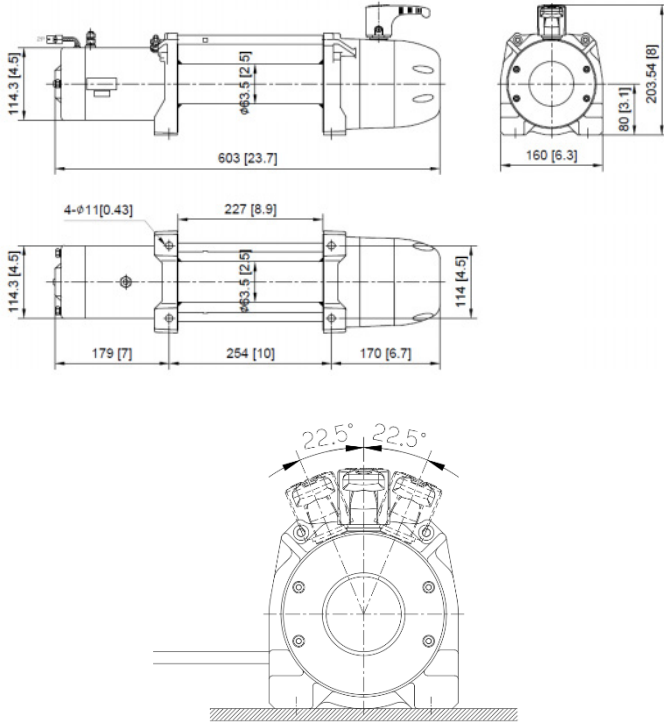
**Comeup Industries Inc.**

**Web site: [www.comeupwinch.com](http://www.comeupwinch.com)**

Tel: +886-2-2497-1788 Fax: +886-2-2497-1699 Email: [info@comeup.com.tw](mailto:info@comeup.com.tw)  
Address: No.139, Jieyukeng Rd., Ruifang Dist., New Taipei City 22453, Taiwan



## Dimension in mm/in



16 equally positioned pin holes ensure seamless clutch transmission and make it easily rotate by 22.5° Increments.

## Performance Data

Line Pull and Rope Capacity		
Layer of Wire Rope	Pull by Layer kg / lb	Total Rope on the Drum m / ft
1 <sup>st</sup>	4,309 / 9,500	5.8 / 19.1
2 <sup>nd</sup>	3,472 / 7,655	13.1 / 42.9
3 <sup>rd</sup>	2,908 / 6,410	21.7 / 71.2
4 <sup>th</sup>	2,501 / 5,514	30.5 / 100

Line Speed and Amp. Draw ( 1st layer of wire rope on the drum )			
Line Pull kg / lb	Line Speed		Amp. Draw 12V
	mpm	fpm	
No Load	14.5	47.6	60
907 / 2,000	4.7	15.2	115
1,814 / 4,000	3.5	11.5	210
2,722 / 6,000	2.8	9.2	245
3,629 / 8,000	2.3	7.6	280
4,309 / 9,500	2.1	6.8	380

## Standard Accessories

- Roller fairlead
- Remote control w/5 m (17') cord
- Detachable control box
- Wire rope w/safety hook
- 1.8 m (6') 2 gauge battery lead
- Handsaver strap

## Options Accessories

- Winch accessory kit

## Warning

- The winch is not intended to be used in any manner for the movement or lifting of personnel.
- The rated line pull shown is based on the first layer of wire rope on the drum.
- The wire rope winding on the drum shall remain 5 wraps from the drum.

## Warranty

Limited lifetime warranty for mechanical components and three ( 3 ) years warranty for electrical components from date of purchase. Wire ropes are not included under warranty.

**Comeup Industries Inc.**

Web site: [www.comeupwinch.com](http://www.comeupwinch.com)

Tel: +886-2-2497-1788 Fax: +886-2-2497-1699 Email: [info@comeup.com.tw](mailto:info@comeup.com.tw)  
Address: No.139, Jieyukeng Rd., Ruifang Dist., New Taipei City 22453, Taiwan



# COMEUP WINCH

## Slim 9.5s



**PN: 295014 / 12V**  
**w/Synthetic Rope & hawse fairlead**

### Features Include

- 12V DC severe duty winch rated at 9,500 lb pulling meets or exceeds your expectations.
- Heavy duty series wound motor equipped with thermal switch alters when motor over-heating.
- 16 equally positioned pin holes with an ergonomic T-handle make it possible to reposition in 22.5 degree Increments.
- Water-proof remote control with thermometric LED indicator w/5 m cord
- A 12 strand construction synthetic rope coated to improve abrasion and has no water absorption.
- Tough aluminum die cast housings withstand strength of 2.0 x rated load of winch
- The U.S. Germany, U.K. France, etc patented mechanical cone brake outside the drum expedites heat dispersion and also makes the winch ideal for use with synthetic rope.
- Meet SAE J706, CE Machinery Directive 2006/42/EC and CE Electromagnetic Compatibility Directive 2014/30/EU.

### Specifications

Rated line pull:	4,309 kg ( 9,500 lb ) single line
Line speed ( 1st layer):	14.8 mpm / 48.6 fpm 60 A at 12V no load 2.2 mpm / 7.2 fpm 380 A at 12V full load
Motor:	3,730 w / 5.0 hp 12V series wound
Gear ratio:	3-stage planetary 159:1
Clutch (freespooling):	Rotating ring gear
Brake (outside the drum):	Automatic, full load cone brake
Winch construction:	Aluminum die cast housings with steel drum
Drum size:	63.5 x 227 L ( 2.5" x 8.9" L )
Control:	Waterproof remote with thermometric indicator LED w/ 5 m cord
Rope:	Synthetic rope
Size:	<b>10 mm x 23.2 m ( 3/8" x 76' )</b>
Mounting bolts pattern:	254 x 114 mm ( 10" x 4.5" )
Mounting:	Foot forward or foot down mounting workable
Finish:	Matte black powder-coated

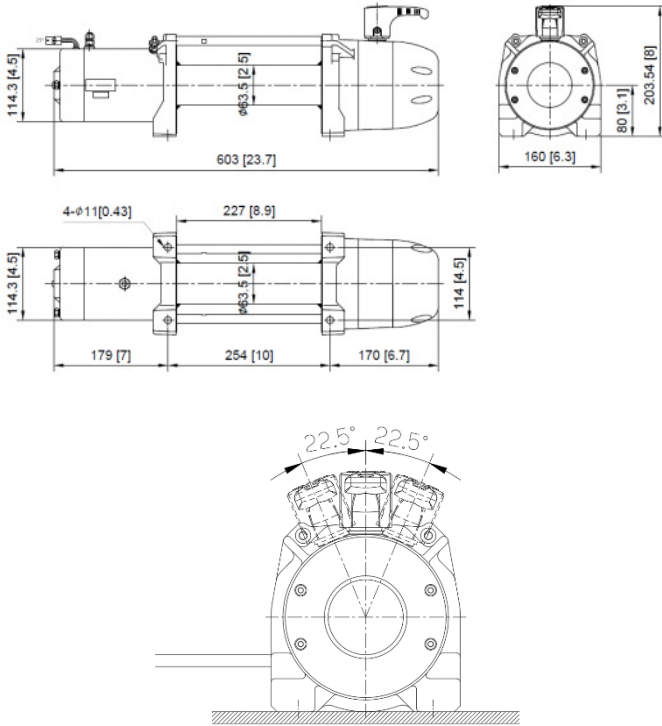
**Comeup Industries Inc.**

Web site: [www.comeupwinch.com](http://www.comeupwinch.com)

Tel: +886-2-2497-1788 Fax: +886-2-2497-1699 Email: [info@comeup.com.tw](mailto:info@comeup.com.tw)  
Address: No.139, Jieyukeng Rd., Ruifang Dist., New Taipei City 22453, Taiwan



## Dimension in mm/in



16 equally positioned pin holes ensure seamless clutch transmission and make it easily rotate by 22.5° Increments.

## Performance Data

Line Pull and Rope Capacity		
Layer of Wire Rope	Pull by Layer kg / lb	Total Rope on the Drum m / ft
1 <sup>st</sup>	4,309 / 9,500	5.1 / 16.7
2 <sup>nd</sup>	3,472 / 7,655	11.7 / 38.4
3 <sup>rd</sup>	2,908 / 6,410	19.7 / 64.6
4 <sup>th</sup>	2,501 / 5,514	23.2 / 76.0

Line Speed and Amp. Draw ( 1st layer of synthetic rope on the drum )			
Line Pull	Line Speed		Amp. Draw
	kg / lb	mpm	
No Load	14.8	48.6	60
907 / 2,000	4.8	15.7	115
1,814 / 4,000	3.6	11.8	210
2,722 / 6,000	2.8	9.2	245
3,629 / 8,000	2.3	7.6	280
4,309 / 9,500	2.2	7.2	380

## Standard Accessories

- Hawse fairlead
- Remote control w / 5 m ( 17' ) cord
- Detachable control box
- Synthetic rope w/sling hook
- 1.8 m ( 6' ) 2 gauge battery lead
- Handsaver strap

## Options Accessories

- Winch accessory kit

## Package

- Winch weight: **28 kg / 61.7 lb**
- Gross weight: **39.5 kg / 87 lb**
- Box dimension: 682 x 209 x 430 mm  
( 26.9 " x 8.2 " x 16.9 " )

## Warning

- The winch is not intended to be used in any manner for the movement or lifting of personnel.
- The rated line pull shown is based on the first layer of synthetic rope on the drum.
- The synthetic rope winding on the drum shall remain 10 wraps from the drum.

## Warranty

Limited lifetime warranty for mechanical components and three ( 3 ) years warranty for electrical components from date of purchase. Synthetic ropes are not included under warranty.

**Comeup Industries Inc.**

Web site: [www.comeupwinch.com](http://www.comeupwinch.com)

Tel: +886-2-2497-1788 Fax: +886-2-2497-1699 Email: [info@comeup.com.tw](mailto:info@comeup.com.tw)  
Address: No.139, Jieyukeng Rd., Ruifang Dist., New Taipei City 22453, Taiwan



# COMEUP WINCH

## Slim 12.5



**PN: 295042 / 12V**  
**w/Wire Rope & roller fairlead**

### Features Include

- 12V DC severe duty winch rated at 12,500 lb pulling meets or exceeds your expectations.
- Heavy duty series wound motor equipped with thermal switch alters when motor over-heating.
- 16 equally positioned pin holes with a stainless steel ergonomic T-handle make it possible to reposition in 22.5 degree Increments.
- Water-proof remote control with thermometric LED indicator w/5 m cord
- Tough aluminum die cast housings withstand strength of 2.0 x rated load of winch
- The U.S. Germany, U.K. France, etc patented mechanical cone brake outside the drum expedites heat dispersion. The greater the load on the rope, the greater amount of braking is generated by the mechanism.
- Meet SAE J706, CE Machinery Directive 2006/42/EC and CE Electromagnetic Compatibility Directive 2014/30/EU.

### Specifications

Rated line pull:	5,670 kg ( 12,500 lb ) single line
Line speed ( 1st layer):	7.5 mpm / 24.6 fpm <b>60 A</b> at 12V no load 0.9 mpm / 3.0 fpm <b>380 A</b> at 12V full load
Motor:	3,730 w / 5.0 hp 12V series wound
Gear ratio:	3-stage planetary 225:1
Clutch (freespooling):	Rotating ring gear
Brake (outside the drum):	Automatic, full load cone brake
Winch construction:	Aluminum die cast housings with steel drum
Drum size:	63.5 x 227 L ( 2.5" x 8.9" L )
Control:	Waterproof remote with thermometric indicator LED w/ 5 m cord
Rope:	Galvanized aircraft A7 x 19 wire rope
Size:	9.5 mm x 25 m ( 3/8" x 82' )
Mounting bolts pattern:	254 x 114 mm ( 10" x 4.5" )
Mounting:	Foot forward mounting only
Finish:	Matte black powder-coated

**Comeup Industries Inc.**

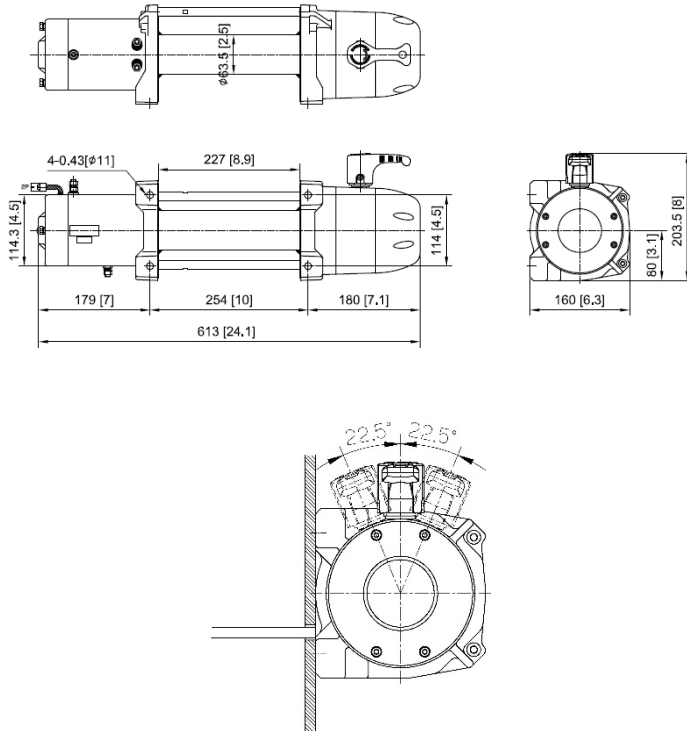
Web site: [www.comeupwinch.com](http://www.comeupwinch.com)

Tel: +886-2-2497-1788 Fax: +886-2-2497-1699 Email: [info@comeup.com.tw](mailto:info@comeup.com.tw)  
Address: No.139, Jieyukeng Rd., Ruifang Dist., New Taipei City 22453, Taiwan





## Dimension in mm/in



16 equally positioned pin holes ensure seamless clutch transmission and make it easily rotate by 22.5° Increments.

## Standard Accessories

- Roller fairlead
- Remote control w / 5 m ( 17' ) cord
- Detachable control box
- Wire rope w/safety hook
- 1.8 m ( 6' ) 2 gauge battery lead
- Handsaver strap

## Warning

- The winch is not intended to be used in any manner for the movement or lifting of personnel.
- The rated line pull shown is based on the first layer of wire rope on the drum.
- The wire rope winding on the drum shall remain 5 wraps from the drum.

## Warranty

Limited lifetime warranty for mechanical components and three ( 3 ) years warranty for electrical components from date of purchase. Wire ropes are not included under warranty.

**Comeup Industries Inc.**

Web site: [www.comeupwinch.com](http://www.comeupwinch.com)

Tel: +886-2-2497-1788 Fax: +886-2-2497-1699 Email: [info@comeup.com.tw](mailto:info@comeup.com.tw)  
Address: No.139, Jieyukeng Rd., Ruifang Dist., New Taipei City 22453, Taiwan

## Performance Data

Line Pull and Rope Capacity		
Layer of Wire Rope	Pull by Layer kg / lb	Total Rope on the Drum m / ft
1 <sup>st</sup>	5,670 / 12,500	5.4 / 17.7
2 <sup>nd</sup>	4,499 / 9,919	12.1 / 39.7
3 <sup>rd</sup>	3,729 / 8,221	20.3 / 66.6
4 <sup>th</sup>	3,184 / 7,020	25.0 / 82.0

Line Speed and Amp. Draw ( 1st layer of wire rope on the drum )			
Line Pull kg / lb	Line Speed		Amp. Draw 12V
	mpm	fpm	
No Load	7.5	24.6	60
907 / 2,000	3.4	11.2	115
1,814 / 4,000	2.5	8.2	160
2,722 / 6,000	2.0	6.6	220
3,629 / 8,000	1.6	5.2	275
5,670 / 12,500	0.9	3.0	380

## Options Accessories

- Winch accessory kit

## Package

- Winch weight: 37.7 kg / 83.1 lb
- Gross weight: 53 kg / 117 lb
- Box dimension: 682 x 209 x 430 mm  
( 26.9 " x 8.2 " x 16.9 " )



# COMEUP WINCH

## Slim 12.5s



**PN: 295037 / 12V**  
**w/Synthetic Rope & hawse fairlead**

### Specifications

Rated line pull:	5,670 kg ( 12,500 lb ) single line
Line speed ( 1st layer):	7.7 mpm / 25.3 fpm 60 A at 12V no load 0.9 mpm / 3.0 fpm 380 A at 12V full load
Motor:	3,730 w / 5.0 hp 12V series wound
Gear ratio:	3-stage planetary 225:1
Clutch (freespooling):	Rotating ring gear
Brake (outside the drum):	Automatic, full load cone brake
Winch construction:	Aluminum die cast housings with steel drum
Drum size:	63.5 x 227 L ( 2.5" x 8.9" L )
Control:	Waterproof remote with thermometric indicator LED w/ 5 m cord
Rope:	Synthetic rope
Size:	<b>11 mm x 21 m ( 7/16" x 69' )</b>
Mounting bolts pattern:	254 x 114 mm ( 10" x 4.5" )
Mounting:	Foot forward mounting only
Finish:	Matte black powder-coated

### Features Include

- 12V DC severe duty winch rated at 12,500 lb pulling meets or exceeds your expectations.
- Heavy duty series wound motor equipped with thermal switch alters when motor over-heating.
- 16 equally positioned pin holes with an ergonomic T-handle make it possible to reposition in 22.5 degree Increments.
- Water-proof remote control with thermometric LED indicator w/5 m cord.
- A 12 strand construction synthetic rope coated to improve abrasion and has no water absorption.
- Tough aluminum die cast housings withstand strength of 2.0 x rated load of winch
- The U.S. Germany, U.K. France, etc patented mechanical cone brake outside the drum expedites heat dispersion and also makes the winch idea for use with synthetic rope.
- Meet SAE J706, CE Machinery Directive 2006/42/EC and CE Electromagnetic Compatibility Directive 2014/30/EU.

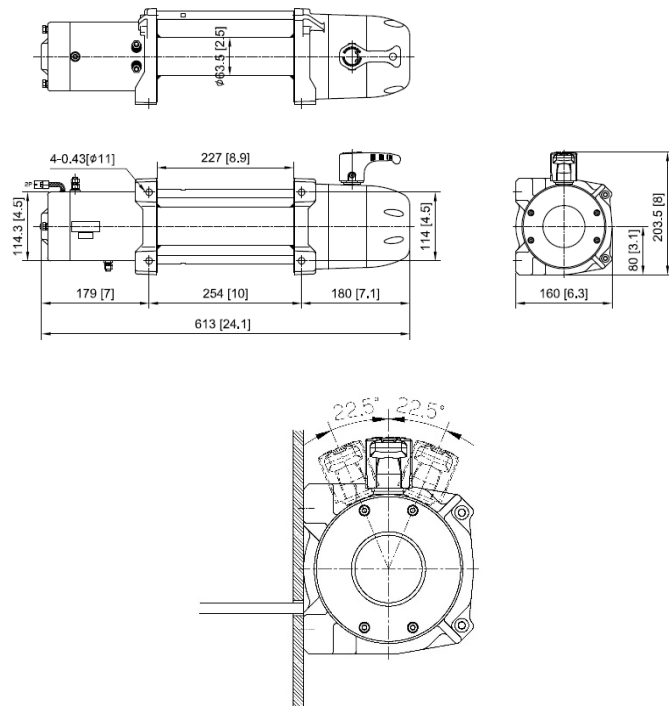
**Comeup Industries Inc.**

Web site: [www.comeupwinch.com](http://www.comeupwinch.com)

Tel: +886-2-2497-1788 Fax: +886-2-2497-1699 Email: [info@comeup.com.tw](mailto:info@comeup.com.tw)  
Address: No.139, Jieyukeng Rd., Ruifang Dist., New Taipei City 22453, Taiwan



## Dimension in mm/in



16 equally positioned pin holes ensure seamless clutch transmission and make it easily rotate by 22.5° Increments.

## Performance Data

Line Pull and Rope Capacity		
Layer of Wire Rope	Pull by Layer kg / lb	Total Rope on the Drum m / ft
1 <sup>st</sup>	5,670 / 12,500	15.7 / 4.8
2 <sup>nd</sup>	4,499 / 9,919	35.7 / 10.9
3 <sup>rd</sup>	3,729 / 8,221	60.7 / 18.5
4 <sup>th</sup>	3,184 / 7,020	<b>69.0 / 21.0</b>

Line Speed and Amp. Draw (1 <sup>st</sup> layer of synthetic rope on the drum)			
Line Pull	Line Speed		Amp. Draw
	kg / lb	mpm	
No Load	7.7	25.3	60
907 / 2,000	3.4	11.2	115
1,814 / 4,000	2.5	8.2	160
2,722 / 6,000	2.0	6.6	220
3,629 / 8,000	1.7	5.6	275
5,670 / 12,500	0.9	3.0	380

## Standard Accessories

- Hawse fairlead
- Remote control w / 5 m ( 17' ) cord
- Detachable control box
- Synthetic rope w/sling hook
- 1.8 m ( 6' ) 2 gauge battery lead
- Handsaver strap

## Options Accessories

- Winch accessory kit

## Package

- Winch weight: **29.3 kg / 64.6 lb**
- Gross weight: **40.3 kg / 89 lb**
- Box dimension: 682 x 209 x 430 mm  
( 26.9 " x 8.2 " x 16.9 " )

## Warning

- The winch is not intended to be used in any manner for the movement or lifting of personnel.
- The rated line pull shown is based on the first layer of synthetic rope on the drum.
- The synthetic rope winding on the drum shall remain 10 wraps from the drum.

## Warranty

Limited lifetime warranty for mechanical components and three ( 3 ) years warranty for electrical components from date of purchase. Synthetic ropes are not included under warranty.

**Comeup Industries Inc.**

Web site: [www.comeupwinch.com](http://www.comeupwinch.com)

Tel: +886-2-2497-1788 Fax: +886-2-2497-1699 Email: [info@comeup.com.tw](mailto:info@comeup.com.tw)  
Address: No.139, Jieyukeng Rd., Ruifang Dist., New Taipei City 22453, Taiwan



# COMEUP WINCH

## Slim 9.5rs Trail Edition

### Features Include



**PN: 295135 / 12V**  
**w/Synthetic Rope & hawse fairlead**

- The Fuse Kit is designed to protect the winch motor and controls from damage caused by Amperage overload or short circuit.

**Built-in wireless control module includes functions:**

- On/Off switch prevents the vehicle battery from draining when no use
- Motor over-heating warning by LED indicators and beeper

- 12V DC severe duty winch rated at 9,500 lbs pulling meets or exceeds your expectations.
- The slim size plus strong of motor housing and gearbox support rack are suitable for equipped with any vehicles.
- Heavy duty series wound motor delivers superior torque output and faster line speed. A motor equipped with a thermal protection switch
- New clutch lever kit is easy to engaged and disengaged. 16 equally positioned pin holes ensure seamless clutch transmission and make it easily rotate by 22.5 degree increments.
- Hardened steel, 3-stage planetary gear train for efficient and reliable operation.
- waterproof remote control.
- A 12 strand construction synthetic rope coated to improve abrasion and has no water absorption.
- The U.S., Germany, U.K., France, etc. patented mechanical cone brake outside the drum expedites heat dispersion and also makes the winch ideal for use with synthetic rope.
- Meets SAE J706, CE Machinery Directive 2006/42/EC and CE Electromagnetic Compatibility Directive 2014/30/EU.
- Tough aluminum die cast housings withstand strength of 2.0 x rated load of winch.
- BossHook M made of strong SCM440 alloy steel, MBS 14,500 KG.

### Specifications

Rated line pull:	4,309 kg ( 9,500 lb ) single line
Line speed ( 1 <sup>st</sup> layer):	14.8 mpm / 48.6 fpm 60 A at 12V no load 2.2 mpm / 7.2 fpm 380 A at 12V full load
Motor:	3,730 w / 5.0 hp 12V series wound
Gear ratio:	3-stage planetary 159:1
Clutch (freespooling):	Rotating ring gear
Brake (outside the drum):	Automatic, full load cone brake
Winch construction:	Aluminum die cast housings with steel drum
Drum size:	63.5 x 227 L ( 2.5" x 8.9" L )
Control:	Both built-in digital signal two ways wireless remote control and waterproof remote with thermometric indicator LED w/ 5 m cord
Rope:	Synthetic rope
Size:	10 mm x 23.2 m ( 3/8" x 76' )
Mounting bolts pattern:	254 x 114 mm ( 10" x 4.5" )
Mounting:	Foot forward or foot down mounting workable
Finish:	Matte black powder-coated

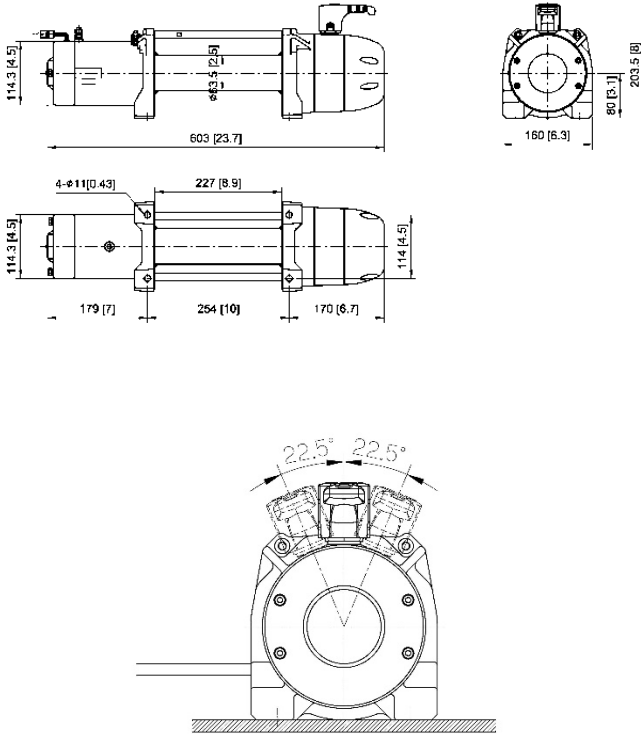
**Comeup Industries Inc.**

**Web site: [www.comeupwinch.com](http://www.comeupwinch.com)**

Tel: +886-2-2497-1788 Fax: +886-2-2497-1699 Email: [info@comeup.com.tw](mailto:info@comeup.com.tw)  
Address: No.139, Jieyukeng Rd., Ruifang Dist., New Taipei City 22453, Taiwan



## Dimension in mm/in



16 equally positioned pin holes ensure seamless clutch transmission and make it easily rotate by 22.5° Increments.

## Standard Accessories

- Hawse fairlead
- Built-in wireless remote control modules
- Remote control w / 5 m ( 17' ) cord
- Detachable control box w/ 250A fuse
- Synthetic rope w/ BossHook M
- 1.8 m ( 6' ) 2 gauge battery lead
- Handsaver strap

## Warning

- The winch is not intended to be used in any manner for the movement or lifting of personnel.
- The rated line pull shown is based on the first layer of synthetic rope on the drum.
- The synthetic rope winding on the drum shall remain 10 wraps from the drum.

## Warranty

Limited lifetime warranty for mechanical components and three ( 3 ) years warranty for electrical components from date of purchase. Synthetic ropes are not included under warranty.

## Comeup Industries Inc.

Tel: +886-2-2497-1788 Fax: +886-2-2497-1699 Email: info@comeup.com.tw  
Address: No.139, Jieyukeng Rd., Ruifang Dist., New Taipei City 22453, Taiwan

Web site: [www.comeupwinch.com](http://www.comeupwinch.com)

## Performance Data

Line Pull and Rope Capacity		
Layer of Wire Rope	Pull by Layer kg / lb	Total Rope on the Drum m / ft
1 <sup>st</sup>	4,309 / 9,500	5.1 / 16.7
2 <sup>nd</sup>	3,472 / 7,655	11.7 / 38.4
3 <sup>rd</sup>	2,908 / 6,410	19.7 / 64.6
4 <sup>th</sup>	2,501 / 5,514	23.2 / 76.0

Line Speed and Amp. Draw ( 1st layer of synthetic rope on the drum )			
Line Pull	Line Speed		Amp. Draw
	kg / lb	mpm	
No Load	14.8	48.6	60
907 / 2,000	4.8	15.7	115
1,814 / 4,000	3.6	11.8	210
2,722 / 6,000	2.8	9.2	245
3,629 / 8,000	2.3	7.6	280
4,309 / 9,500	2.2	7.2	380

## Options Accessories

- Winch accessory kit

## Package

- Winch weight: 28 kg / 61.7 lb
- Gross weight: 39.5 kg / 87 lb
- Box dimension: 682 x 209 x 430 mm  
( 26.9 " x 8.2 " x 16.9 " )



# COMEUP WINCH

## Slim 12.5rs Trail Edition

### Features Include



**PN: 295114 / 12V  
w/Synthetic Rope & hawse fairlead**

- The Fuse Kit is designed to protect the winch motor and controls from damage caused by Amperage overload or short circuit.

**Built-in wireless control module includes functions:**

- On/Off switch prevents the vehicle battery from draining when no use
- Motor over-heating warning by LED indicators and beeper

- 12V DC severe duty winch rated at 12,500 lbs pulling meets or exceeds your expectations.
- The slim size plus strong of motor housing and gearbox support rack are suitable for equipped with any vehicles.
- Heavy duty series wound motor delivers superior torque output and faster line speed. A motor equipped with a thermal protection switch
- New clutch lever kit is easy to engaged and disengaged. 16 equally positioned pin holes ensure seamless clutch transmission and make it easily rotate by 22.5 degree increments.
- Hardened steel, 3-stage planetary gear train for efficient and reliable operation.
- waterproof remote control.
- A 12 strand construction synthetic rope coated to improve abrasion and has no water absorption.
- The U.S., Germany, U.K., France, etc. patented mechanical cone brake outside the drum expedites heat dispersion and also makes the winch ideal for use with synthetic rope.
- Meets SAE J706, CE Machinery Directive 2006/42/EC and CE Electromagnetic Compatibility Directive 2014/30/EU.
- Tough aluminum die cast housings withstand strength of 2.0 x rated load of winch.
- BossHook M made of strong SCM440 alloy steel, MBS 14,500 KG.

### Specifications

Rated line pull:	5,670 kg ( 12,500 lb ) single line
Line speed (1 <sup>st</sup> layer):	7.7 mpm / 25.3 fpm 60 A at 12V no load 0.9 mpm / 3.0 fpm 380 A at 12V full load
Motor:	3,730 w / 5.0 hp 12V series wound
Gear ratio:	3-stage planetary 225:1
Clutch (freespooling):	Rotating ring gear
Brake (outside the drum):	Automatic, full load cone brake
Winch construction:	Aluminum die cast housings with steel drum
Drum size:	63.5 x 227 L ( 2.5" x 8.9" L )
Control:	Both built-in digital signal two ways wireless remote control and waterproof remote with thermometric indicator LED w/ 5 m cord
Rope:	Synthetic rope
Size:	11 mm x 21 m ( 7/16" x 69' )
Mounting bolts pattern:	254 x 114 mm ( 10" x 4.5" )
Mounting:	Foot forward mounting only
Finish:	Matte black powder-coated

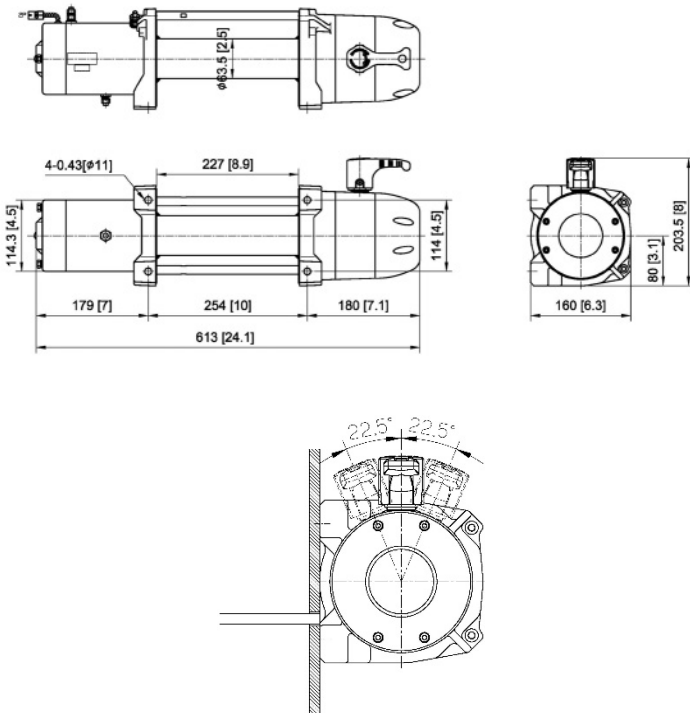
**Comeup Industries Inc.**

Web site: [www.comeupwinch.com](http://www.comeupwinch.com)

Tel: +886-2-2497-1788 Fax: +886-2-2497-1699 Email: [info@comeup.com.tw](mailto:info@comeup.com.tw)  
Address: No.139, Jieyukeng Rd., Ruifang Dist., New Taipei City 22453, Taiwan



## Dimension in mm/in



16 equally positioned pin holes ensure seamless clutch transmission and make it easily rotate by 22.5° Increments.

## Standard Accessories

- Hawse fairlead
- Built-in wireless remote control modules
- Remote control w / 5 m ( 17' ) cord
- Detachable control box w/ 300A fuse
- Synthetic rope w/ BossHook M
- 1.8 m ( 6' ) 2 gauge battery lead
- Handsaver strap

## Warning

- The winch is not intended to be used in any manner for the movement or lifting of personnel.
- The rated line pull shown is based on the first layer of synthetic rope on the drum.
- The synthetic rope winding on the drum shall remain 10 wraps from the drum.

## Warranty

Limited lifetime warranty for mechanical components and three ( 3 ) years warranty for electrical components from date of purchase. Synthetic ropes are not included under warranty.

## Comeup Industries Inc.

Tel: +886-2-2497-1788 Fax: +886-2-2497-1699 Email: info@comeup.com.tw  
Address: No.139, Jieyukeng Rd., Ruifang Dist., New Taipei City 22453, Taiwan

Web site: [www.comeupwinch.com](http://www.comeupwinch.com)

## Performance Data

Line Pull and Rope Capacity		
Layer of Wire Rope	Pull by Layer kg / lb	Total Rope on the Drum m / ft
1 <sup>st</sup>	5,670 / 12,500	15.7 / 4.8
2 <sup>nd</sup>	4,499 / 9,919	35.7 / 10.9
3 <sup>rd</sup>	3,729 / 8,221	60.7 / 18.5
4 <sup>th</sup>	3,184 / 7,020	69.0 / 21.0

Line Speed and Amp. Draw (1 <sup>st</sup> layer of synthetic rope on the drum )			
Line Pull	Line Speed		Amp. Draw
	kg / lb	mpm	
No Load	7.7	25.3	60
907 / 2,000	3.4	11.2	115
1,814 / 4,000	2.5	8.2	160
2,722 / 6000	2.0	6.6	220
3,629 / 8,000	1.7	5.6	275
5,670 / 12,500	0.9	3.0	380

## Options Accessories

- Winch accessory kit

## Package

- Winch weight: 29.3 kg / 64.6 lb
- Gross weight: 40.3 kg / 89 lb
- Box dimension: 682 x 209 x 430 mm  
( 26.9 " x 8.2 " x 16.9 " )



# COMEUP WINCH

## Slim 9.5rsi Trail Edition

### Features Include



**PN: 295022 / 12V**  
**w/Synthetic Rope & hawse fairlead**

- Tough aluminum die cast housings withstand strength of 2.0 x rated load of winch.
- U.S. Germany, U.K. France, etc patented mechanical cone brake holds the full load

- 12V DC severe duty winch rated at 9,500 lbs pulling meets or exceeds your expectations.
- The slim size plus strong of motor housing and gearbox support rack are suitable for equipped with any vehicles.
- Heavy duty series wound motor delivers superior torque output and faster line speed. A motor equipped with a thermal protection switch
- New clutch lever kit is easy to engaged and disengaged. 16 equally positioned pin holes ensure seamless clutch transmission and make it easily rotate by 22.5 degree increments.
- Hardened steel, 3-stage planetary gear train for efficient and reliable operation.
- On/Off switch prevents the vehicle battery from draining when no use.
- Both built-in digital two way wireless remote control and wired waterproof remote control.
- A 12 strand construction synthetic rope coated to improve abrasion and has no water absorption.
- BossHook M made of strong SCM440 alloy steel, MBS 14,500 KG.
- The Fuse Kit is designed to protect the winch motor and controls from damage caused by Amperage overload or short circuit.

### Specifications

Rated line pull:	4,309 kg ( 9,500 lb ) single line
Line speed (1 <sup>st</sup> layer):	14.8 mpm / 48.6 fpm 60 A at 12V no load 2.2 mpm / 7.2 fpm 380 A at 12V full load
Motor:	3,730 w / 5.0 hp 12V series wound
Gear ratio:	3-stage planetary 159:1
Clutch (freespooling):	Rotating ring gear
Brake (outside the drum):	Automatic, full load cone brake
Winch construction:	Aluminum die cast housings with steel drum
Drum size:	63.5 x 227 L ( 2.5" x 8.9" L )
Control:	Digital two-way wireless remote control and water-proof wired remote control with thermometric LED indicator
Rope:	Synthetic rope
Size:	10 mm x 23.2 m ( 3/8" x 76' )
Mounting bolts pattern:	254 x 114 mm ( 10" x 4.5" )
Mounting:	Foot forward or foot down mounting workable
Finish:	Matte black powder-coated

**Comeup Industries Inc.**

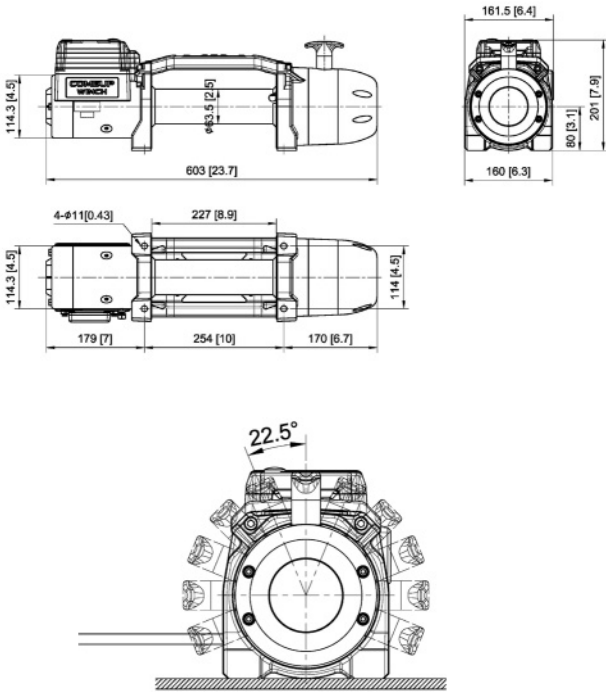
Web site: [www.comeupwinch.com](http://www.comeupwinch.com)

Tel: +886-2-2497-1788 Fax: +886-2-2497-1699 Email: [info@comeup.com.tw](mailto:info@comeup.com.tw)  
Address: No.139, Jieyukeng Rd., Ruifang Dist., New Taipei City 22453, Taiwan





## Dimension in mm/in



16 equally positioned pin holes ensure seamless clutch transmission, making it easily rotate by 22.5° Increments.

## Standard Accessories

- Hawse fairlead
- Built-in wireless remote control modules
- Remote control w/ 5 m ( 17' ) cord
- Bridge control box w/ 250A fuse
- Synthetic rope w/ BossHook M
- 1.8 m ( 6' ) 2 gauge battery lead
- Handsaver strap

## Warning

- The winch is not intended to be used in any manner for the movement or lifting of personnel.
- The rated line pull shown is based on the first layer of synthetic rope on the drum.
- The synthetic rope winding on the drum shall remain 10 wraps from the drum.

## Warranty

Limited lifetime warranty for mechanical components and three ( 3 ) years warranty for electrical components from date of purchase. Synthetic ropes are not included under warranty.

## Comeup Industries Inc.

Tel: +886-2-2497-1788 Fax: +886-2-2497-1699 Email: info@comeup.com.tw  
Address: No.139, Jieyukeng Rd., Ruifang Dist., New Taipei City 22453, Taiwan

Web site: [www.comeupwinch.com](http://www.comeupwinch.com)

## Performance Data

### Line Pull and Rope Capacity

Layer of Wire Rope	Pull by Layer kg / lb	Total Rope on the Drum m / ft
1 <sup>st</sup>	4,309 / 9,500	5.1 / 16.7
2 <sup>nd</sup>	3,472 / 7,655	11.7 / 38.4
3 <sup>rd</sup>	2,908 / 6,410	19.7 / 64.6
4 <sup>th</sup>	2,501 / 5,514	23.2 / 76.0

### Line Speed and Amp. Draw ( 1<sup>st</sup> layer of synthetic rope on the drum )

Line Pull kg / lb	Line Speed		Amp. Draw
	mpm	fpm	
No Load	14.8	48.6	60
907 / 2,000	4.8	15.7	115
1,814 / 4,000	3.6	11.8	210
2,722 / 6,000	2.8	9.2	245
3,629 / 8,000	2.3	7.6	280
4,309 / 9,500	2.2	7.2	380

## Options Accessories

- Winch accessory kit

## Package

- Winch weight: 30.3 kg / 66.8 lb
- Gross weight: 38.6 kg / 85.3 lb
- Box dimension: 682 x 209 x 430 mm  
( 26.9" x 8.2" x 16.9" )



# COMEUP WINCH

## Slim 12.5rsi Trail Edition



**PN: 295073 / 12V**  
**w/Synthetic Rope & hawse fairlead**

- Tough aluminum die cast housings withstand strength of 2.0 x rated load of winch.
- U.S. Germany, U.K. France, etc patented mechanical cone brake holds the full load

### Features Include

- 12V DC severe duty winch rated at 12,500 lbs pulling meets or exceeds your expectations.
- The slim size plus strong of motor housing and gearbox support rack are suitable for equipped with any vehicles.
- Heavy duty series wound motor delivers superior torque output and faster line speed. A motor equipped with a thermal protection switch
- New clutch lever kit is easy to engaged and disengaged. 16 equally positioned pin holes ensure seamless clutch transmission and make it easily rotate by 22.5 degree increments.
- Hardened steel, 3-stage planetary gear train for efficient and reliable operation.
- On/Off switch prevents the vehicle battery from draining when no use.
- Both built-in digital two way wireless remote control and wired waterproof remote control.
- A 12 strand construction synthetic rope coated to improve abrasion and has no water absorption.
- BossHook M made of strong SCM440 alloy steel, MBS 14,500 KG.
- The Fuse Kit is designed to protect the winch motor and controls from damage caused by Amperage overload or short circuit.

### Specifications

Rated line pull:	5,670 kg ( 12,500 lb ) single line
Line speed (1 <sup>st</sup> layer):	7.7 mpm / 25.3 fpm <b>60 A</b> at 12V no load 0.9 mpm / 3.0 fpm <b>380 A</b> at 12V full load
Motor:	3,730 w / 5.0 hp 12V series wound
Gear ratio:	3-stage planetary 225:1
Clutch (freespooling):	Rotating ring gear
Brake (outside the drum):	Automatic, full load cone brake
Winch construction:	Aluminum die cast housings with steel drum
Drum size:	63.5 x 227 L ( 2.5" x 8.9" L )
Control:	Digital two-way wireless control and water-proof wired remote control with thermometric LED indicator
Rope:	Synthetic rope
Size:	11 mm x 21 m ( 7/16" x 69' )
Mounting bolts pattern:	254 x 114 mm ( 10" x 4.5" )
Mounting:	Foot forward or foot down mounting workable
Finish:	Matte black powder-coated

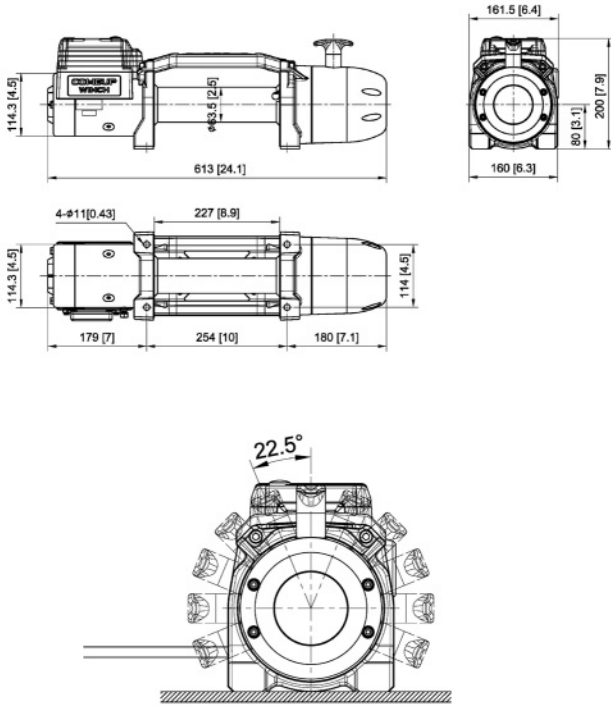
**Comeup Industries Inc.**

Web site: [www.comeupwinch.com](http://www.comeupwinch.com)

Tel: +886-2-2497-1788 Fax: +886-2-2497-1699 Email: [info@comeup.com.tw](mailto:info@comeup.com.tw)  
Address: No.139, Jieyukeng Rd., Ruifang Dist., New Taipei City 22453, Taiwan



## Dimension in mm/in



16 equally positioned pin holes ensure seamless clutch transmission, making it easy to rotate by 22.5° Increments.

## Performance Data

Line Pull and Rope Capacity		
Layer of Wire Rope	Pull by Layer kg / lb	Total Rope on the Drum m / ft
1 <sup>st</sup>	5,670 / 12,500	4.8 / 15.7
2 <sup>nd</sup>	4,499 / 9,919	10.9 / 35.7
3 <sup>rd</sup>	3,729 / 8,221	18.5 / 60.7
4 <sup>th</sup>	3,184 / 7,020	21.0 / 69.0

Line Speed and Amp. Draw ( 1 <sup>st</sup> layer of synthetic rope on the drum )			
Line Pull	Line Speed		Amp. Draw
	kg / lb	mpm	
No Load	7.7	25.3	60
907 / 2,000	3.4	11.2	115
1,814 / 4,000	2.5	8.2	160
2,722 / 6,000	2.0	6.6	220
3,629 / 8,000	1.7	5.6	275
5,670 / 12,500	0.9	3.0	380

## Standard Accessories

- Hawse fairlead
- Built-in wireless remote control modules
- Remote control w/ 5 m ( 17' ) cord
- Bridge control box w/ 300A fuse
- Synthetic rope w/ BossHook M
- 1.8 m ( 6' ) 2 gauge battery lead
- Handsaver strap

## Options Accessories

- Winch accessory kit

## Package

- Winch weight: 31.1 kg / 68.6 lb
- Gross weight: 39.4 kg / 87 lb
- Box dimension: 682 x 209 x 430 mm  
( 26.9" x 8.2" x 16.9" )

## Warning

- The winch is not intended to be used in any manner for the movement or lifting of personnel.
- The rated line pull shown is based on the first layer of synthetic rope on the drum.
- The synthetic rope winding on the drum shall remain 10 wraps from the drum.

## Warranty

Limited lifetime warranty for mechanical components and three ( 3 ) years warranty for electrical components from date of purchase. Synthetic ropes are not included under warranty.

**Comeup Industries Inc.**

Web site: [www.comeupwinch.com](http://www.comeupwinch.com)

Tel: +886-2-2497-1788 Fax: +886-2-2497-1699 Email: [info@comeup.com.tw](mailto:info@comeup.com.tw)  
Address: No.139, Jieyukeng Rd., Ruifang Dist., New Taipei City 22453, Taiwan

