

NEWSLETTER



SEIZING THE TREND, LIFTING THE STANDARD — COMEUP UNVEILS NEW 48V DC HOIST FOR TRUCK-MOUNTED CRANES

As electrification transforms commercial vehicles, 48V-powered truck-mounted cranes are emerging as a key solution for efficient and eco-friendly lifting operations. COMEUP has embraced this shift by introducing its new **48V DC HOIST** — a compact, high-performance electric hoist designed specifically for truck-mounted crane applications.

Meeting Market Demands — 48V Powers Next-Generation Truck Cranes

The 48V system is now favored for modern commercial vehicles, offering better energy efficiency and precise control. COMEUP's **48V DC HOIST** delivers strong lifting power with low energy use, ideal for OEMs and fleet upgrades.

With growing electrification and tighter environmental regulations, the truck-mounted crane market is set to expand. COMEUP is expanding its 48V hoist platform to meet this demand, providing reliable, sustainable lifting solutions across industries.



Features Include

- Provides an answer to the health and safety recommendations for manual lifting
- High efficient low amp. draw and sealed permanent magnet motor.
- Lightweight and compact design is ideal for easy installation..
- Mechanical spring applied and permanent motor dynamic brakes together for safe, controlled load.
- Waterproof industrial remote control with 5 m lead
- Full metal 3 stage planetary gear train for greater pulling force.
- Submersible sealed contactor handles high amps and allows higher duty cycle.
- In compliance with standard of ASME B30.5 for $D/d \geq 18$ and rope safety factor ≥ 3.5



Comeup Version

PN 750160 12V

750188 24V

750265 12V w/controls and rope assembly

750280 24V w/controls and rope assembly

750300 48V w/controls and rope assembly

Specifications

| | |
|--------------------------|---|
| Rated load: | 295 kg (650 lb) |
| Line speed (1st layer): | 12V.. 6.1 mpm / 20.0 fpm 20 A at no load 4.4 mpm / 14.4 fpm 55 A at full load 24V.. 7.0 mpm / 23.0 fpm 15 A at no load 5.3 mpm / 17.4 fpm 30 A at full load 48V.. 4.8 mpm / 15.7 fpm 6 A at no load 4.6 mpm / 15.1 fpm 15 A at full load |
| Motor: | 800 w / 1.0 hp 12V / 24V/48V, permanent magnet |
| Gear ratio: | 3-stage planetary 138.5:1 |
| Brake: | Mechanical spring applied and permanent motor dynamic brakes together |
| Winch construction: | Aluminum die cast housings and drum |
| Drum size: | 61.2 x 105 x 75 L (2.4 " x 4.13 " x 3.0 " L) |
| Control: | Remote control with 5 m (17') lead |
| Recommended wire rope: | Galvanized aircraft A7 x 19 |
| Size: | 3.6 mm x 18.3 m (9/64" x 60') A7 x 19 |
| Mounting bolts pattern: | 124 x 76 mm (4.9" x 3") |
| Standard Compliance: | - CE Machinery Directive 2006/42/EC- CE EMC Directive 2014/30/EU- ASME B30.5 |

Comeup Industries Inc.

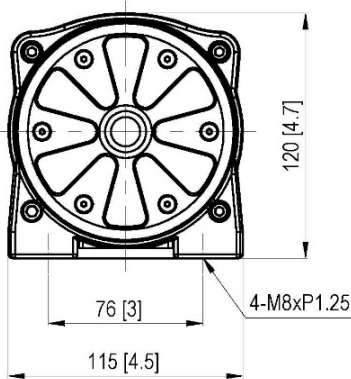
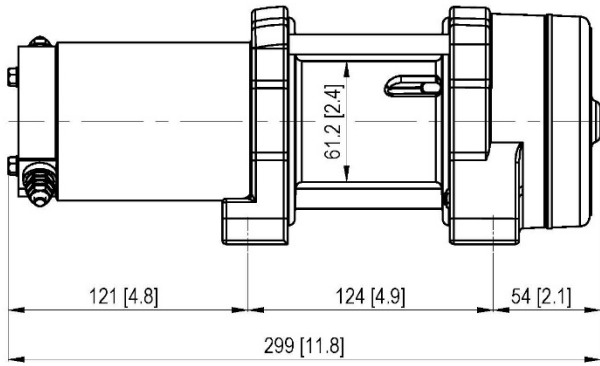
Web site: www.comeupwinch.com

Tel: +886-2-2497-1788 Fax: +886-2-2497-1699 Email: info@comeup.com.tw

Address: No.139, Jieyukeng Rd., Ruifang Dist., New Taipei City 22453, Taiwan



Dimension in mm/in



Performance Data

| Line Pull and Rope Capacity | | | | | |
|-----------------------------|--------------------------|--------------------------------|--------------------------------|--------------------------------|----------------------------------|
| Layer of Wire Rope | Load by Layer kg / lb | Line Speed mpm / fpm 12V | Line Speed mpm / fpm 24V | Line Speed mpm / fpm 48V | Total Rope on the Drum m / ft |
| 1 st | 295 / 650 | 4.4 / 14.4 | 5.3 / 17.4 | 4.6/15.1 | 4.1 / 13.5 |
| 2 nd | 266 / 586 | 4.9 / 16.1 | 5.9 / 19.4 | 5.1/16.7 | 8.7 / 28.5 |
| 3 rd | 241 / 531 | 5.4 / 17.7 | 6.5 / 21.3 | 5.7/18.7 | 13.8 / 45.3 |
| 4 th | 221 / 487 | 5.9 / 19.4 | 7.1 / 23.3 | 6.2/20.0 | 18.3 / 60.0 |

| Line Speed and Amp. Draw (1st layer of wire rope on the drum) | | | | | | | | | | Percentage Duty Cycle Min / 10 min | | |
|---|----------------------|-----|-----|------|------|------|-----------|-----|-----|---------------------------------------|-----|-----|
| Line Pull | Line Speed mpm / fpm | | | | | | Amp. Draw | | | | | |
| kg / lb | 12V | 24V | 48V | 12V | 24V | 48V | 12V | 24V | 48V | 12V | 24V | 48V |
| No Load | 6.1 | 7.0 | 4.8 | 20.0 | 23.0 | 15.7 | 20 | 15 | 6 | con | con | con |
| 147 / 320 | 5.0 | 6.0 | 4.7 | 16.4 | 19.7 | 15.4 | 40 | 22 | 10 | 5.0 | 4.0 | 5.0 |
| 295 / 650 | 4.4 | 5.3 | 4.6 | 14.4 | 17.4 | 15.1 | 55 | 30 | 15 | 3.5 | 3.0 | 3.5 |

Accessories

- Wire rope 3.6 mm x 18.3 m w/clevis hook (Sold separately)
- Remote control with 5 m lead (Sold separately)
- Control pack (Sold separately)

Package

- Hoist weight: 7.7 kg / 17 lb
- Gross weight: 11.6 kg / 25.6 lb
- Box dimension: 390 x 170 x 300 mm (15.4" x 6.7" x11.8")

Warning

- The hoist is not intended to be used in any manner for the movement or lifting of personnel.
- The rated load shown is based on the first layer of rope on the drum.
- The rope winding on the drum shall remain 5 wraps from the drum.

Warranty

Each new hoist is guaranteed against defects in workmanship and material defects for a period of twelve months from date of purchase.

Comeup Industries Inc.

Web site: www.comeupwinch.com

Tel: +886-2-2497-1788 Fax: +886-2-2497-1699 Email: info@comeup.com.tw
Address: No.139, Jieyukeng Rd., Ruifang Dist., New Taipei City 22453, Taiwan



COMEUP WINCH

GTD-800



Comeup Version

PN: 750888 12V
750898 24V
751000 48V w/controls and rope assembly
750925 12V w/controls and rope assembly
750955 24V w/controls and rope assembly

Features Include

- Provides an answer to the health and safety recommendations for manual lifting
- High efficient low amp. draw and sealed permanent magnet motor.
- Lightweight and compact design is ideal for easy installation..
- Mechanical spring applied and permanent motor dynamic brakes together for safe, controlled load.
- Waterproof industrial remote control with 5 m lead
- Full metal 3 stage planetary gear train for greater pulling force.
- Submersible sealed contactor handles high amps and allows higher duty cycle.
- In compliance with standard of ASME B30.5 for $D/d \geq 18$ and rope safety factor ≥ 3.5

Specifications

| | |
|--------------------------|---|
| Rated load: | 362 kg (800 lb) |
| Line speed (1st layer): | 12V.. 5.0 mpm / 16.4 fpm 30 A at no load 3.6 mpm / 11.8 fpm 55 A at full load 24V.. 5.5 mpm / 18.0 fpm 15 A at no load 4.0 mpm / 13.1 fpm 35 A at full load 48V.. 4.0 mpm / 13.1 fpm 5 A at no load 3.8 mpm / 12.5 fpm 15 A at full load |
| Motor: | 800 w / 1.0 hp 12V/24V/48V, permanent magnet |
| Gear ratio: | 3-stage planetary 191:1 |
| Brake: | Mechanical spring applied and permanent motor dynamic brakes together |
| Winch construction: | Aluminum die cast housings and drum |
| Drum size: | 68 x 105 x 119 L (2.7 " x 4.1 " x 4.7 " L) |
| Control: | Remote control with 5 m (17') lead |
| Recommended wire rope: | Galvanized aircraft A7 x 19 |
| Size: | 4.0 mm x 18.3 m (5/32 " x 60') A7 x 19 |
| Mounting bolts pattern: | 168 x 76 mm (6.6" x 3") |
| Standard Compliance: | - CE Machinery Directive 2006/42/EC / - CE EMC Directive 2014/30/EU / - ASME B30.5 |

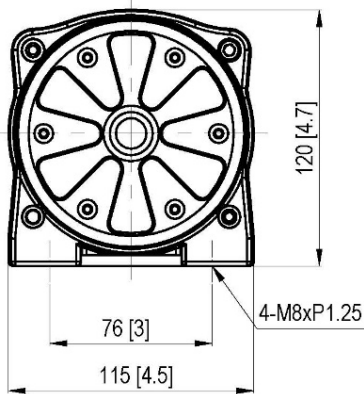
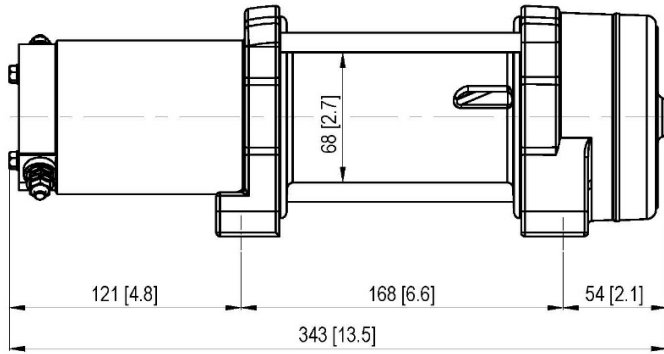
Comeup Industries Inc.

Web site: www.comeupwinch.com

Tel: +886-2-2497-1788 Fax: +886-2-2497-1699 Email: info@comeup.com.tw
Address: No.139, Jieyukeng Rd., Ruifang Dist., New Taipei City 22453, Taiwan



Dimension in mm/in



Performance Data

| Line Pull and Rope Capacity | | | | | |
|-----------------------------|-----------------------|--------------------------|--------------------------|--------------------------|-------------------------------|
| Layer of Wire Rope | Load by Layer kg / lb | Line Speed mpm / fpm 12V | Line Speed mpm / fpm 24V | Line Speed mpm / fpm 48V | Total Rope on the Drum m / ft |
| 1 st | 362 / 800 | 3.6 / 11.8 | 4.0 / 13.1 | 3.8/12.5 | 6.6 / 21.7 |
| 2 nd | 327 / 721 | 4.0 / 13.1 | 4.5 / 14.8 | 4.2/13.8 | 14.0 / 45.9 |
| 3 rd | 297 / 655 | 4.4 / 14.4 | 4.9 / 16.1 | 4.6/15.1 | 18.3 / 60.0 |

| Line Speed and Amp. Draw (1st layer of wire rope on the drum) | | | | | | | | | | Percentage Duty Cycle Min / 10 min | | |
|---|----------------------|-----|-----|------|------|------|-----------|-----|-----|------------------------------------|-----|-----|
| Line Pull | Line Speed mpm / fpm | | | | | | Amp. Draw | | | | | |
| kg / lb | 12V | 24V | 48V | 12V | 24V | 48V | 12V | 24V | 48V | 12V | 24V | 48V |
| No Load | 5.0 | 5.5 | 4.0 | 16.4 | 18.0 | 13.1 | 30 | 15 | 5 | con | con | con |
| 181 / 400 | 4.1 | 4.5 | 3.9 | 13.4 | 14.8 | 12.8 | 40 | 25 | 8 | 6.0 | 4.0 | 5.0 |
| 362 / 800 | 3.6 | 4.0 | 3.8 | 11.8 | 13.1 | 12.5 | 55 | 35 | 15 | 4.0 | 2.5 | 3.5 |

Accessories

- Wire rope 4.0 mm x 18.3 m w/clevis hook (Sold separately)
- Remote control with 5 m lead (Sold separately)
- Contactor box (Sold separately)

Package

- Hoist weight: 8.3 kg / 18.3 lb
- Gross weight: 12.2 kg / 26.9 lb
- Box dimension: 430 x170 x 300 mm (16.9" x 6.7" x 11.8")

Warning

- The hoist is not intended to be used in any manner for the movement or lifting of personnel.
- The rated load shown is based on the first layer of rope on the drum.
- The rope winding on the drum shall remain 5 wraps from the drum.

Warranty

Each new hoist is guaranteed against defects in workmanship and material defects for a period of twelve months from date of purchase.

Comeup Industries Inc.

Web site: www.comeupwinch.com

Tel: +886-2-2497-1788 Fax: +886-2-2497-1699 Email: info@comeup.com.tw
Address: No.139, Jieyukeng Rd., Ruifang Dist., New Taipei City 22453, Taiwan

