

NEWSLETTER



SEIZING THE TREND, LEADING THE FUTURE — COMEUP UNVEILS NEW 48V ELECTRIC WINCH

As the global automotive industry accelerates toward electrification, electric vehicles (EVs) are no longer the future—they are the present. COMEUP has seized this momentum by launching its all-new 48V Electric Winch, delivering a professional and efficient solution tailored for the evolving EV market.

Meeting Market Demands — 48V Becomes the New Benchmark

The 48V electrical architecture is quickly becoming standard for new energy vehicles. COMEUP's 48V winch meets both OEM and aftermarket demands with its high torque, low power consumption, and intelligent control features.

The EV winch market is projected to grow at over 12% CAGR in the next five years. COMEUP will expand this 48V platform into new sectors, including electric pickups, light-duty utility vehicles, and off-road EVs, aiming to capture premium market segments.



COMEUP WINCH

DV-9



PN 856329 12V
PN 856355 24V
PN 856375 48V

Features Include

- Reliable electric winch for working and playing in off-road environments.
- 3,430w/12V or 1,940w/24V or **3,430 w /48V** series wound motor.
- 9 equally positioned pin holes with an ergonomic T-handle make it possible to reposition in 40 degree Increments.
- Hardened steel, 3-stage planetary gear train for efficient and reliable operation
- Water-proof remote control with thermometric LED indicator alerts when the motor is over-heated.
- U.S. Germany, U.K. France, etc patented mechanical cone brake holds the full load without slipping.
- Submersible sealed contactor handles high amps and allows higher duty cycle.

Specifications

Rated line pull:	4,082 kg (9,000 lb) single line
Line speed (1 st layer):	13.4 mpm / 44 fpm 55A / 12V or 30A / 24V or 13A / 48V at no load 2.0 mpm / 6.4 fpm 350A / 12V or 210A / 24V or 105A / 48V at full load
Motor:	3,430 w / 4.6 hp 12V series wound 1,940 w / 2.6 hp 24V series wound 3,430 w / 4.6 hp 48V series wound
Gear ratio:	3-stage planetary 156:1
Clutch (freespooling):	Rotating ring gear
Brake (outside the drum):	Automatic, full load cone brake
Winch construction:	Aluminum die cast housings with steel drum
Drum size:	63.5 x 229 L (2.5" x 9" L)
Control:	Weather proof remote with thermometric indicator LED and 5 m (17') cord
Wire rope:	Galvanized aircraft A7 x 19
Size:	8.3 mm x 30.5 m (21/64" x 100')
Mounting bolts pattern:	254 x 114 mm (10" x 4.5")

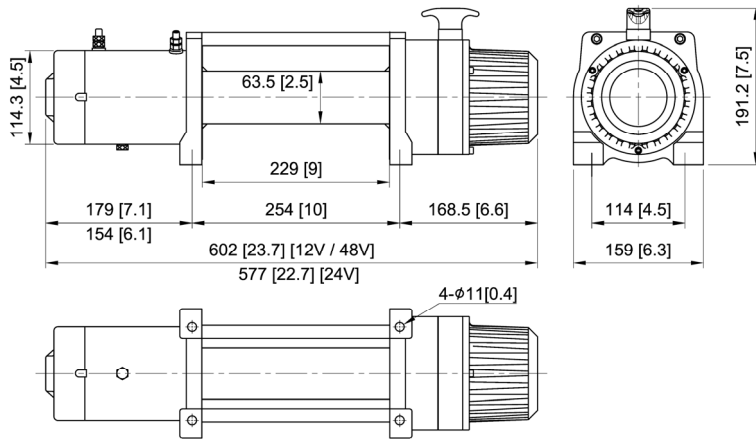
Comeup Industries Inc.

Web site: **www.comeupwinch.com**

Tel: +886-2-2497-1788 Fax: +886-2-2497-1699 Email: info@comeup.com.tw
Address: No.139, Jieyukeng Rd., Ruifang Dist., New Taipei City 22453, Taiwan



Dimension in mm/in



Performance Data

Line Pull and Rope Capacity		
Layer of Wire Rope	Pull by Layer kg / lb	Total Rope on the Drum m / ft
1 st	4,082 / 9,000	6.1 / 20.0
2 nd	3,316 / 7,310	13.6 / 44.7
3 rd	2,792 / 6,154	22.6 / 74.1
4 th	2,410 / 5,314	30.5 / 100.0

Line Speed and Amp. Draw (1st layer of wire rope on the drum)					
Line Pull	Line Speed		Amp. Draw		
kg / lb	mpm	fpm	12V	24V	48V
No Load	13.4	44.0	55	30	13
907 / 2,000	4.6	15.1	110	65	31
1,814 / 4,000	3.4	11.2	200	100	50
2,722 / 6,000	2.7	9.0	230	130	65
3,629 / 8,000	2.3	7.5	260	170	88
4,082 / 9,000	2.0	6.4	350	210	105

Standard Accessories

- Roller fairlead
- Remote control w/ 5 m (17') cord
- Detachable control box
- Wire rope w/clevis hook
- 1.8 m (6') 2 gauge battery lead
- Handsaver strap

Options Accessories

- Mounting channel
- Snatch block
- Winch accessory kit

Package

- Winch weight (including rope): 33 kg / 72.8 lb
- Gross weight: 43 kg / 94.8 lb
- Box dimension: 650 x 192 x 415 mm
(25.6" x 7.7" x 16.3")

Warning

- The winch is not intended to be used in any manner for the movement or lifting of personnel.
- The rated line pull shown is based on the first layer of wire rope on the drum.
- The wire rope winding on the drum shall remain 5 wraps from the drum.

Warranty

Limited lifetime warranty for mechanical components and one (1) year warranty for electrical components from date of purchase. Wire/Synthetic ropes are not included under warranty.

Comeup Industries Inc.

Web site: www.comeupwinch.com

Tel: +886-2-2497-1788 Fax: +886-2-2497-1699 Email: info@comeup.com.tw
Address: No.139, Jieyukeng Rd., Ruifang Dist., New Taipei City 22453, Taiwan



COMEUP WINCH

DV-9s



COMEUP Version
PN 859252 12V
PN 859262 24V
PN 859220 48V

Features Include

- Reliable electric winch for working and playing in off-road environments.
- 3,430w/12V or 1,940w/24V or 3,430 w /48V series wound motor.
- 9 equally positioned pin holes with an ergonomic T-handle make it possible to reposition in 40 degree Increments.
- Hardened steel, 3-stage planetary gear train for efficient and reliable operation.
- 12 strand construction synthetic rope, coated to improve abrasion resistance and to protect from the ingress of dirt and grit.
- Water-proof remote control with thermometric LED indicator alerts when the motor is over-heated.
- U.S. Germany, U.K. France, etc patented mechanical cone brake holds the full load without slipping.
- Submersible sealed contactor handles high amps and allows higher duty cycle.

Specifications

Rated line pull:	4,082 kg (9,000 lb) single line
Line speed (1 st layer):	13.2 mpm / 43.3 fpm 55A / 12V or 30A / 24V or 13A / 48V at no load 2.0 mpm / 6.5 fpm 350A / 12V or 210A / 24V or 105A / 48V at full load
Motor:	3,430 w / 4.6 hp 12V series wound 1,940 w / 2.6 hp 24V series wound 3,430 w / 4.6 hp 48V series wound
Gear ratio:	3-stage planetary 156:1
Clutch (freespooling):	Rotating ring gear
Brake (outside the drum):	Automatic, full load cone brake
Winch construction:	Aluminum die cast housings with steel drum
Drum size:	63.5 x 227 L (2.5" x 8.9" L)
Control:	Weather proof remote with thermometric indicator LED and 5 m (17') cord
Rope:	Synthetic rope
Size:	10 mm x 30.5 m (3/8" x 100')
Mounting bolts pattern:	254 x 114 mm (10" x 4.5")

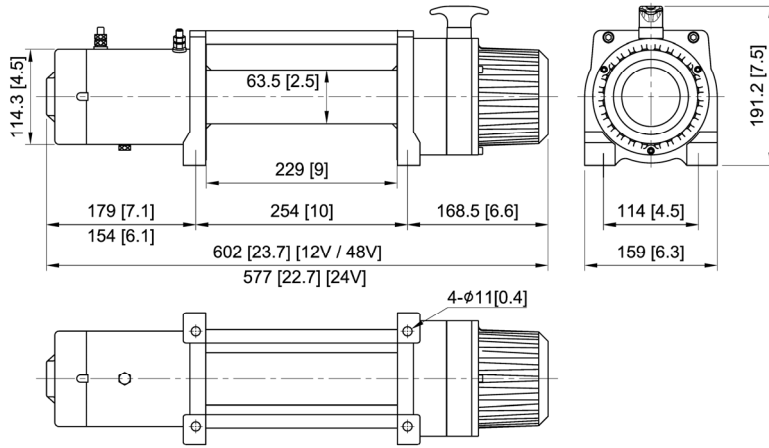
Comeup Industries Inc.

Web site: www.comeupwinch.com

Tel: +886-2-2497-1788 Fax: +886-2-2497-1699 Email: info@comeup.com.tw
Address: No.139, Jieyukeng Rd., Ruifang Dist., New Taipei City 22453, Taiwan



Dimension in mm/in



Performance Data

Line Pull and Rope Capacity		
Layer of Rope	Pull by Layer kg / lb	Total Rope on the Drum m / ft
1 st	4,082 / 9,000	5.5 / 18.1
2 nd	3,316 / 7,310	12.5 / 41.0
3 rd	2,792 / 6,154	20.9 / 68.6
4 th	2,410 / 5,314	30.5 / 100

Line Speed and Amp. Draw (1st layer of rope on the drum)					
Line Pull	Line Speed		Amp. Draw		
kg / lb	mpm	fpm	12V	24V	48V
No Load	13.2	43.3	55	30	13
907 / 2,000	4.7	15.3	110	65	31
1,814 / 4,000	3.4	11.2	200	100	50
2,722 / 6,000	2.8	9.1	230	130	65
3,629 / 8,000	2.3	7.6	260	170	88
4,082 / 9,000	2.0	6.5	350	210	105

Standard Accessories

- Hawse fairlead
- Remote control w/ 5 m (17') cord
- Detachable control box
- Synthetic rope w/sling hook
- 1.8 m (6') 2 gauge battery lead
- Handsaver strap

Options Accessories

- Mounting channel
- Snatch block
- Winch accessory kit

Package

- Winch weight (including rope): 27 kg / 59.5 lb
- Gross weight: 33 kg / 72.8 lb
- Box dimension: 650 x 192 x 415 mm
(25.6" x 7.7" x 16.3")

Warning

- The winch is not intended to be used in any manner for the movement or lifting of personnel.
- The rated line pull shown is based on the first layer of wire rope on the drum.
- The wire rope winding on the drum shall remain 5 wraps from the drum.

Warranty

Limited lifetime warranty for mechanical components and one (1) year warranty for electrical components from date of purchase. Wire/Synthetic ropes are not included under warranty.

Comeup Industries Inc.

Web site: www.comeupwinch.com

Tel: +886-2-2497-1788 Fax: +886-2-2497-1699 Email: info@comeup.com.tw
Address: No.139, Jieyukeng Rd., Ruifang Dist., New Taipei City 22453, Taiwan





PN 856360 12V
PN 856388 24V
PN 856390 48V

Features Include

- Reliable electric winch for working and playing in off-road environments.
- 3,430w/12V or 1,940w/24V or 3,430 w /48V series wound motor.
- 9 equally positioned pin holes with an ergonomic T-handle make it possible to reposition in 40 degree Increments.
- Hardened steel, 3-stage planetary gear train for efficient and reliable operation
- Water-proof remote control with thermometric LED indicator alerts when the motor is over-heated.
- U.S. Germany, U.K. France, etc patented mechanical cone brake holds the full load without slipping.
- Submersible sealed contactor handles high amps and allows higher duty cycle.

Specifications

Rated line pull:	4,082 kg (9,000 lb) single line
Line speed (1 st layer):	13.4 mpm / 44 fpm 55A / 12V or 30A / 24V or 13A / 48V at no load 2.0 mpm / 6.4 fpm 350A / 12V or 210A / 24V or 105A / 48V at full load
Motor:	3,430 w / 4.6 hp 12V series wound 1,940 w / 2.6 hp 24V series wound 3,430 w / 4.6 hp 48V series wound
Gear ratio:	3-stage planetary 156:1
Clutch (freespooling):	Rotating ring gear
Brake (outside the drum):	Automatic, full load cone brake
Winch construction:	Aluminum die cast housings with steel drum
Drum size:	63.5 x 229 L (2.5" x 9" L)
Control:	Weather proof remote with thermometric indicator LED and 5 m (17') cord
Wire rope:	Galvanized aircraft A7 x 19
Size:	8.3 mm x 30.5 m (21/64" x 100')
Mounting bolts pattern:	254 x 114 mm (10" x 4.5")

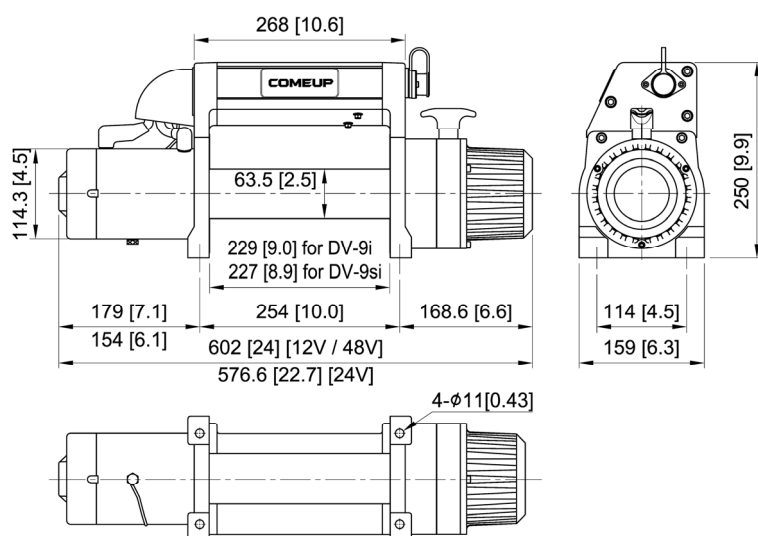
Comeup Industries Inc.

Web site: www.comeupwinch.com

Tel: +886-2-2497-1788 Fax: +886-2-2497-1699 Email: info@comeup.com.tw
 Address: No.139, Jieyukeng Rd., Ruifang Dist., New Taipei City 22453, Taiwan



Dimension in mm/in



Performance Data

Line Pull and Rope Capacity		
Layer of Wire Rope	Pull by Layer kg / lb	Total Rope on the Drum m / ft
1 st	4,082 / 9,000	6.1 / 20.0
2 nd	3,316 / 7,310	13.6 / 44.7
3 rd	2,792 / 6,154	22.6 / 74.1
4 th	2,410 / 5,314	30.5 / 100.0

Line Speed and Amp. Draw (1st layer of wire rope on the drum)					
Line Pull	Line Speed		Amp. Draw		
kg / lb	mpm	ftpm	12V	24V	48V
No Load	13.4	44.0	55	30	13
907 / 2,000	4.6	15.1	110	65	31
1,814 / 4,000	3.4	11.2	200	100	50
2,722 / 6,000	2.7	9.0	230	130	65
3,629 / 8,000	2.3	7.5	260	170	88
4,082 / 9,000	2.0	6.4	350	210	105

Standard Accessories

- Roller fairlead
- Remote control w/ 5 m (17') cord
- Detachable control box
- Wire rope w/clevis hook
- 1.8 m (6') 2 gauge battery lead
- Handsaver strap

Options Accessories

- Mounting channel
- Snatch block
- Winch accessory kit

Package

- Winch weight (including rope): 37 kg / 81.6 lb
- Gross weight: 44 kg / 97 lb
- Box dimension: 650 x 192 x 415 mm
(25.6" x 7.7" x 16.3")

Warning

- The winch is not intended to be used in any manner for the movement or lifting of personnel.
- The rated line pull shown is based on the first layer of wire rope on the drum.
- The wire rope winding on the drum shall remain 5 wraps from the drum.

Warranty

Limited lifetime warranty for mechanical components and one (1) year warranty for electrical components from date of purchase. Wire/Synthetic ropes are not included under warranty.

Comeup Industries Inc.

Tel: +886-2-2497-1788 Fax: +886-2-2497-1699 Email: info@comeup.com.tw
Address: No.139, Jieyukeng Rd., Ruifang Dist., New Taipei City 22453, Taiwan

Web site: www.comeupwinch.com



COMEUP WINCH

DV-9si



COMEUP Version
PN 859038 12V
PN 859055 24V
PN 859035 48V

Features Include

- Reliable electric winch for working and playing in off-road environments.
- 3,430w/12V or 1,940w/24V or 3,430 w /48V series wound motor.
- 9 equally positioned pin holes with an ergonomic T-handle make it possible to reposition in 40 degree Increments.
- Hardened steel, 3-stage planetary gear train for efficient and reliable operation.
- 12 strand construction synthetic rope, coated to improve abrasion resistance and to protect from the ingress of dirt and grit.
- Water-proof remote control with thermometric LED indicator alerts when the motor is over-heated.
- U.S. Germany, U.K. France, etc patented mechanical cone brake holds the full load without slipping.
- Submersible sealed contactor handles high amps and allows higher duty cycle.

Specifications

Rated line pull:	4,082 kg (9,000 lb) single line
Line speed (1 st layer):	13.2 mpm / 43.3 fpm 55A / 12V or 30A / 24V or 13A / 48V at no load 2.0 mpm / 6.5 fpm 350A / 12V or 210A / 24V or 105A / 48V at full load
Motor:	3,430 w / 4.6 hp 12V series wound 1,940 w / 2.6 hp 24V series wound 3,430 w / 4.6 hp 48V series wound
Gear ratio:	3-stage planetary 156:1
Clutch (freespooling):	Rotating ring gear
Brake (outside the drum):	Automatic, full load cone brake
Winch construction:	Aluminum die cast housings with steel drum
Drum size:	63.5 x 227 L (2.5" x 8.9" L)
Control:	Weather proof remote with thermometric indicator LED and 5 m (17') cord
Rope:	Synthetic rope
Size:	10 mm x 30.5 m (3/8" x 100')
Mounting bolts pattern:	254 x 114 mm (10" x 4.5")

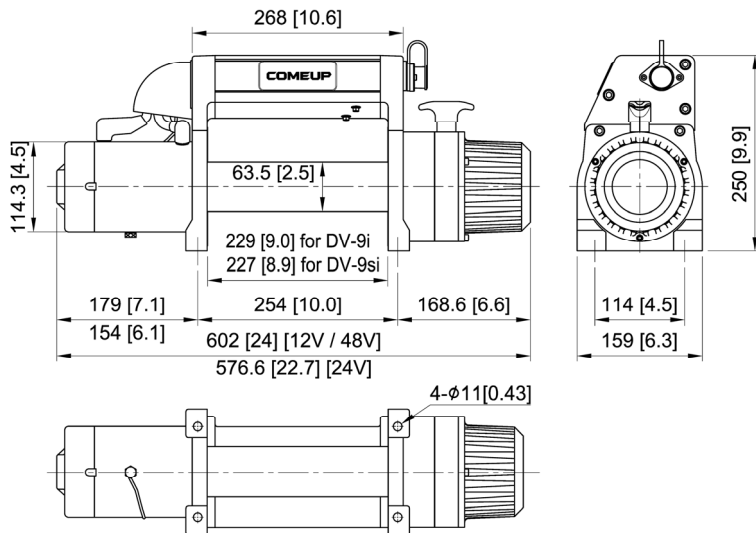
Comeup Industries Inc.

Web site: www.comeupwinch.com

Tel: +886-2-2497-1788 Fax: +886-2-2497-1699 Email: info@comeup.com.tw
Address: No.139, Jieyukeng Rd., Ruifang Dist., New Taipei City 22453, Taiwan



Dimension in mm/in



Performance Data

Line Pull and Rope Capacity		
Layer of Rope	Pull by Layer kg / lb	Total Rope on the Drum m / ft
1 st	4,082 / 9,000	5.5 / 18.1
2 nd	3,316 / 7,310	12.5 / 41.0
3 rd	2,792 / 6,154	20.9 / 68.6
4 th	2,410 / 5,314	30.5 / 100.0

Line Speed and Amp. Draw (1 st layer of rope on the drum)					
Line Pull	Line Speed		Amp. Draw		
kg / lb	mpm	fpm	12V	24V	48V
No Load	13.2	43.3	55	30	13
907 / 2,000	4.7	15.3	110	65	31
1,814 / 4,000	3.4	11.2	200	100	50
2,722 / 6,000	2.8	9.1	230	130	65
3,629 / 8,000	2.3	7.6	260	170	88
4,082 / 9,000	2.0	6.5	350	210	105

Standard Accessories

- Hawse fairlead
- Remote control w/ 5 m (17') cord
- Bridge control box
- Synthetic rope w/sling hook
- 1.8 m (6') 2 gauge battery lead
- Handsaver strap

Options Accessories

- Mounting channel
- Snatch block
- Winch accessory kit

Package

- Winch weight (including rope): 31 kg / 68.3 lb
- Gross weight: 37 kg / 81.6 lb
- Box dimension: 650 x 192 x 415 mm
(25.6" x 7.7" x 16.3")

Warning

- The winch is not intended to be used in any manner for the movement or lifting of personnel.
- The rated line pull shown is based on the first layer of wire rope on the drum.
- The wire rope winding on the drum shall remain 5 wraps from the drum.

Warranty

Limited lifetime warranty for mechanical components and one (1) year warranty for electrical components from date of purchase. Wire/Synthetic ropes are not included under warranty.

Comeup Industries Inc.

Web site: www.comeupwinch.com

Tel: +886-2-2497-1788 Fax: +886-2-2497-1699 Email: info@comeup.com.tw
Address: No.139, Jieyukeng Rd., Ruifang Dist., New Taipei City 22453, Taiwan



COMEUP WINCH

DV-12 lite

Features Include



PN 850012 12V
PN 850124 24V
PN 850134 48V

- Reliable electric winch for working and playing in off-road environments.
- 3,430w/12V or 1,940w/24V or 3,430w/48V series wound motor.
- 9 equally positioned pin holes with an ergonomic T-handle make it possible to reposition in 40 degree Increments.
- Hardened steel, 3-stage planetary gear train for efficient and reliable operation
- Water-proof remote control with thermometric LED indicator alerts when the motor is over-heated.
- U.S. Germany, U.K. France, etc patented mechanical cone brake holds the full load without slipping.
- Submersible sealed contactor handles high amps and allows higher duty cycle.

Specifications

Rated line pull:	5,443 kg (12,000 lb) single line
Line speed (1st layer):	8 mpm / 26.2 fpm 50 A at 12V or 30A / 24V or 15A / 48V at no load 1.0 mpm / 3.3 fpm 350 A at 12 V or 210A / 24V or 95A / 48V at full load
Motor:	3,430 w / 4.6 hp 12V series wound 1,940 w / 2.6 hp 24V series wound 3,430 w / 4.6 hp 48V series wound
Gear ratio:	3-stage planetary 211:1
Clutch (freespooling):	Rotating ring gear
Brake (outside the drum):	Automatic, full load cone brake
Winch construction:	Aluminum die cast housings with steel drum
Drum size:	63.5 x 229 L (2.5" x 9" L)
Control:	Weather proof remote with thermometric indicator LED and 5 m (17') cord
Wire rope:	Galvanized aircraft A7 x 19
Size:	9.5 mm x 25 m (3/8" x 82') A7 x 19
Mounting bolts pattern:	254 x 114 mm (10" x 4.5")

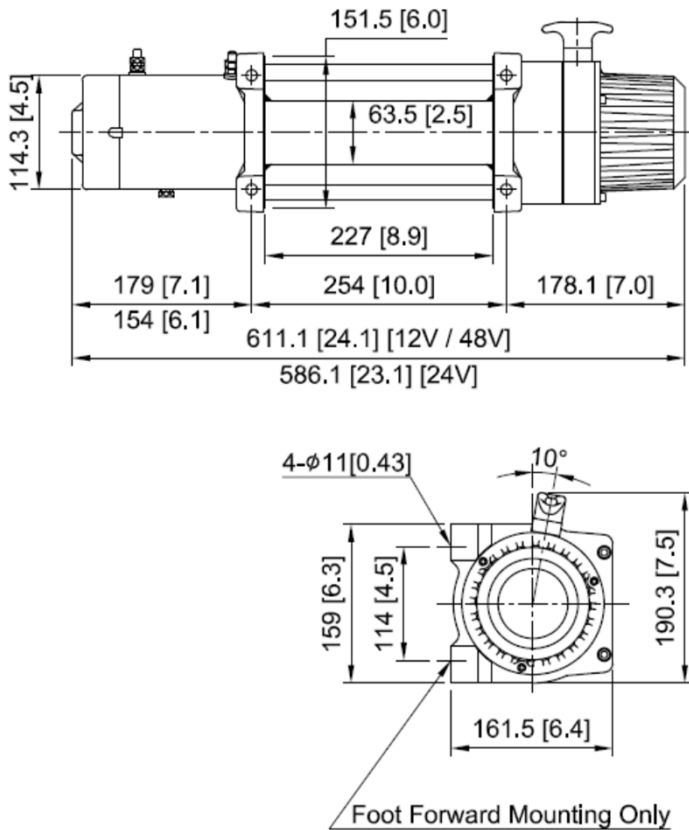
Comeup Industries Inc.

Web site: www.comeupwinch.com

Tel: +886-2-2497-1788 Fax: +886-2-2497-1699 Email: info@comeup.com.tw
Address: No.139, Jieyukeng Rd., Ruifang Dist., New Taipei City 22453, Taiwan



Dimension in mm/in



Performance Data

Line Pull and Rope Capacity		
Layer of Wire Rope	Pull by Layer kg / lb	Total Rope on the Drum m / ft
1 st	5,443 / 12,000	5.4 / 17.7
2 nd	4,319 / 9,522	12.2 / 40.0
3 rd	3,580 / 7,893	20.5 / 67.3
4 th	3,056 / 6,737	25.0 / 82.0

Line Speed and Amp. Draw (1st layer of wire rope on the drum)					
Line Pull	Line Speed		Amp. Draw		
kg / lb	mpm	fpm	12V	24V	48V
No Load	8.0	26.2	50	30	15
1,814 / 4,000	3.0	9.7	120	70	38
3,629 / 8,000	1.5	5.0	230	140	65
4,536 / 10,000	1.2	4.0	290	180	77
5,443 / 12,000	1.0	3.3	350	210	95

Standard Accessories

- Roller fairlead
- Remote control w/ 5 m (17') cord
- Detachable control box
- Wire rope w/clevis hook
- 1.8 m (6') 2 gauge battery lead
- Handsaver strap

Options Accessories

- Mounting channel
- Snatch block
- Winch accessory kit

Package

- Winch weight: 39 kg / 86 lb
- Gross weight: 49 kg / 108 lb
- Box dimension: 650 x 192 x 415 mm
(25.6" x 7.7" x 16.3")

Warning

- The winch is not intended to be used in any manner for the movement or lifting of personnel.
- The rated line pull shown is based on the first layer of rope on the drum.
- The rope winding on the drum shall remain 5 wraps from the drum.

Warranty

Limited lifetime warranty for mechanical components and one (1) year warranty for electrical components from date of purchase. Wire/Synthetic ropes are not included under warranty.

Comeup Industries Inc.

Web site: www.comeupwinch.com

Tel: +886-2-2497-1788 Fax: +886-2-2497-1699 Email: info@comeup.com.tw
Address: No.139, Jieyukeng Rd., Ruifang Dist., New Taipei City 22453, Taiwan



COMEUP WINCH

DV-12s lite



COMEUP Version
PN 850125 12V
PN 851024 24V
PN 851030 48V

Features Include

- Reliable electric winch for working and playing in off-road environments.
- 3,430w/12V or 1,940w/24V or 3,430 w/48V series wound motor.
- 9 equally positioned pin holes with an ergonomic T-handle make it possible to reposition in 40 degree Increments.
- Hardened steel, 3-stage planetary gear train for efficient and reliable operation
- 12 strand construction synthetic rope, coated to improve abrasion resistance and to protect from the ingress of dirt and grit.
- Water-proof remote control with thermometric LED indicator alerts when the motor is over-heated.
- U.S. Germany, U.K. France, etc patented mechanical cone brake holds the full load without slipping.
- Submersible sealed contactor handles high amps and allows higher duty cycle.

Specifications

Rated line pull:	5,443 kg (12,000 lb) single line
Line speed (1 st layer):	8.2 mpm / 26.9 fpm 50 A at 12V or 30A / 24V or 15A / 48V at no load 1.0 mpm / 3.3 fpm 350 A at 12V or 210A / 24V or 95A / 48V at full load
Motor:	3,430 w / 4.6 hp 12V series wound 1,940 w / 2.6 hp 24V series wound 3,430 w / 4.6 hp 48V series wound
Gear ratio:	3-stage planetary 211:1
Clutch (freespooling):	Rotating ring gear
Brake (outside the drum):	Automatic, full load cone brake
Winch construction:	Aluminum die cast housings with steel drum
Drum size:	63.5 x 229 L (2.5" x 9" L)
Control:	Weather proof remote with thermometric indicator LED and 5 m (17') cord
Rope:	Synthetic rope
Size:	11 mm x 25 m (7/16" x 82')
Mounting bolts pattern:	254 x 114 mm (10" x 4.5")
Mounting:	Foot forward mounting only

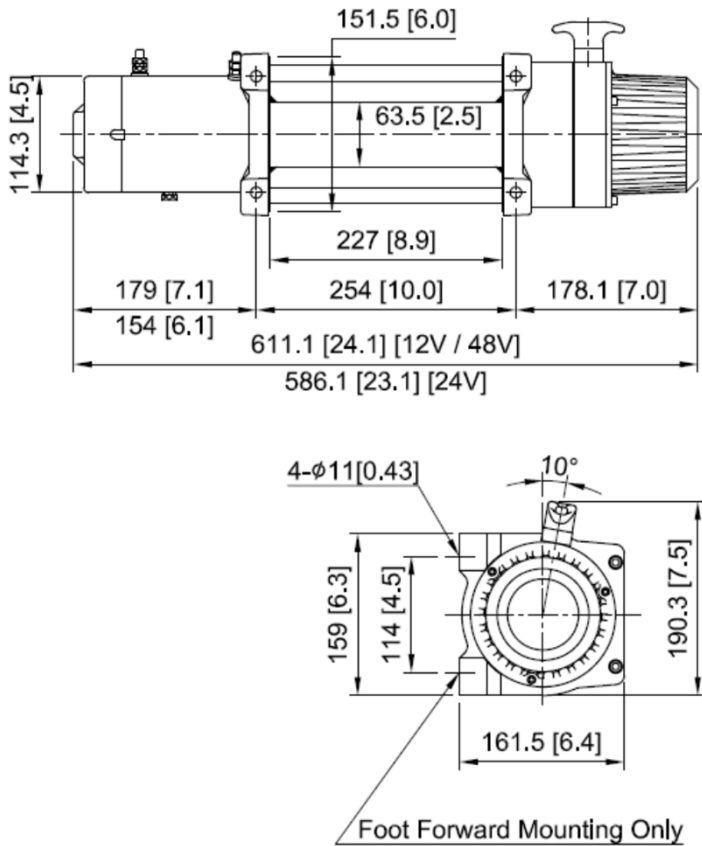
Comeup Industries Inc.

Web site: www.comeupwinch.com

Tel: +886-2-2497-1788 Fax: +886-2-2497-1699 Email: info@comeup.com.tw
Address: No.139, Jieyukeng Rd., Ruifang Dist., New Taipei City 22453, Taiwan



Dimension in mm/in



Performance Data

Line Pull and Rope Capacity		
Layer of Wire Rope	Pull by Layer kg / lb	Total Rope on the Drum m / ft
1 st	5,443 / 12,000	5.4 / 17.7
2 nd	4,319 / 9,522	12.2 / 40.0
3 rd	3,580 / 7,893	20.5 / 67.3
4 th	3,056 / 6,737	25.0 / 82.0

Line Speed and Amp. Draw (1st layer of wire rope on the drum)					
Line Pull	Line Speed		Amp. Draw		
kg / lb	mpm	fpm	12V	24V	48V
No Load	8.2	26.9	50	30	15
1,814 / 4,000	3.1	10.2	120	70	38
3,629 / 8,000	1.6	5.1	230	140	65
4,536 / 10,000	1.2	4.0	290	180	77
5,443 / 12,000	1.0	3.3	350	210	95

Standard Accessories

- Hawse fairlead
- Remote control w/ 5 m (17') cord
- Detachable control box
- Synthetic rope w/sling hook
- 1.8 m (6') 2 gauge battery lead
- Handsaver strap

Options Accessories

- Mounting channel
- Snatch block
- Winch accessory kit

Package

- Winch weight (including rope): 30 kg / 66.1 lb
- Gross weight: 36 kg / 79.4 lb
- Box dimension: 650 x 192 x 415 mm
(25.6" x 7.7" x 16.3")

Warning

- The winch is not intended to be used in any manner for the movement or lifting of personnel.
- The rated line pull shown is based on the first layer of rope on the drum.
- The rope winding on the drum shall remain 10 wraps from the drum.

Warranty

Limited lifetime warranty for mechanical components and one (1) year warranty for electrical components from date of purchase. Wire/Synthetic ropes are not included under warranty.

Comeup Industries Inc.

Web site: www.comeupwinch.com

Tel: +886-2-2497-1788 Fax: +886-2-2497-1699 Email: info@comeup.com.tw
Address: No.139, Jieyukeng Rd., Ruifang Dist., New Taipei City 22453, Taiwan





PN 857130 12V
PN 857228 24V
PN 857270 48V

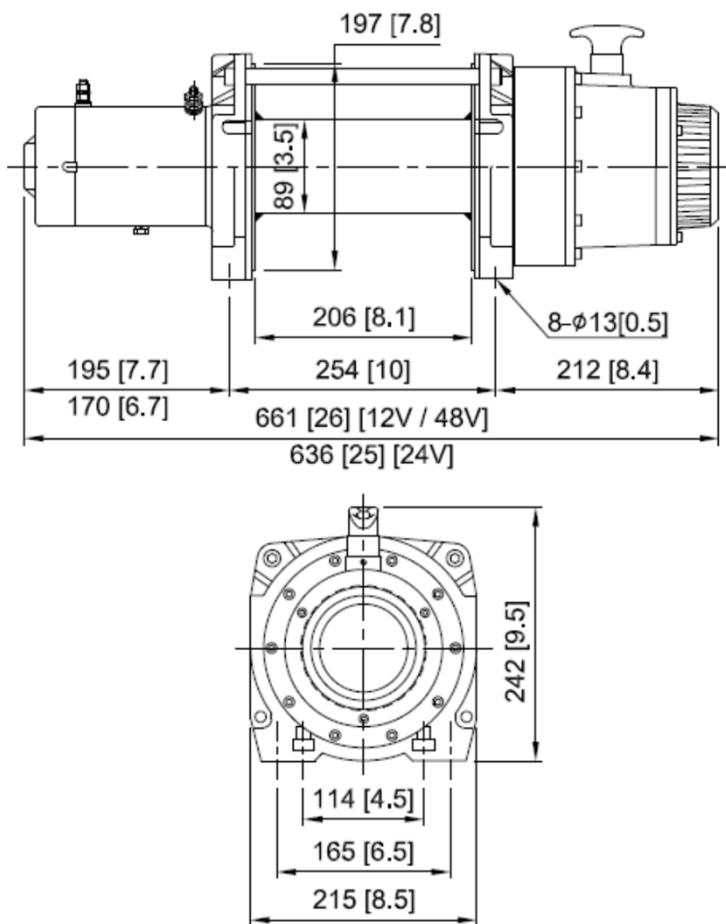
Specifications

Rated line pull:	5,443 kg (12,000 lb) single line
Line speed (1st layer):	8.3 mpm / 27.2 fpm 60A / 12V or 50A / 24V or 15A / 48V at no load 1.2 mpm / 4.0 fpm 440A / 12V or 290A / 24V or 100A / 48V at full load
Motor:	4,180 w / 5.6 hp 12V series wound 2,690 w / 3.6 hp 24V series wound 4,180 w / 5.6 hp 48V series wound
Gear ratio:	3-stage planetary 261:1
Clutch (freespooling):	Rotating ring gear
Brake (outside the drum):	Automatic, full load cone brake
Winch construction:	Aluminum die cast housings with steel drum
Drum size:	89 x 206 L (3.5" x 8.1" L)
Control:	Weather proof remote with thermometric indicator LED and 5 m (17') cord
Wire rope:	Galvanized aircraft A7 x 19
Size:	9.5 mm x 38 m (3/8" x 125')
Mounting bolts pattern:	254 x 114 mm (10" x 4.5") 254 x 165 mm (10" x 6.5")

Features Include

- Reliable electric winch for working and playing in off-road environments.
- 4,180 w/12V or 2,690 w/24V **or 4,180 w /48V** series wound motor.
- 10 equally positioned pin holes with an ergonomic T-handle make it possible to reposition in 36 degree Increments.
- Hardened steel, 3-stage planetary gear train for efficient and reliable operation
- Water-proof remote control with thermometric LED indicator alerts when the motor is over-heated.
- U.S. Germany, U.K. France, etc patented mechanical cone brake holds the full load without slipping.
- Submersible sealed contactor handles high amps and allows higher duty cycle.
- Meet international standards such as SAE J706, CE Machinery Directive 2006/42/EC and CE EMC directive 2014/30/EU

Dimension in mm/in



Performance Data

Line Pull and Rope Capacity		
Layer of Wire Rope	Pull by Layer kg / lb	Total rope on the Drum m / ft
1 st	5,443 / 12,000	6.6 / 21.5
2 nd	4,563 / 10,060	14.4 / 47.2
3 rd	3,928 / 8,659	23.5 / 77.1
4 th	3,448 / 7,601	33.8 / 110.9
5 th	3,072 / 6,774	38.0 / 125.0

Line Speed and Amp. Draw (1st layer of wire rope on the drum)					
Line Pull	Line Speed		Amp. Draw		
kg / lb	mpm	fpm	12V	24V	48V
No Load	8.3	27.2	60	50	15
1,814 / 4,000	2.6	8.6	200	100	45
3,629 / 8,000	1.7	5.8	310	190	70
4,536 / 10,000	1.4	4.4	370	230	80
5,443 / 12,000	1.2	4.0	440	290	100

Standard Accessories

- Roller fairlead
- Remote control w/ 5 m (17') cord
- Detachable control box
- Wire rope w/safety hook
- 1.8 m (6') 2 gauge battery lead
- Handsaver strap

Options Accessories

- Mounting channel
- Snatch block
- Winch accessory kit

Package

- Winch weight: 55 kg / 121 lb
- Gross weight: 67 kg / 147.7 lb
- Box dimension: 695 x 265 x 420 mm
(27.3" x 10.4" x 16.5")

Warning

- The winch is not intended to be used in any manner for the movement or lifting of personnel.
- The rated line pull shown is based on the first layer of rope on the drum.
- The rope winding on the drum shall remain 5 wraps from the drum.

Warranty

Limited lifetime warranty for mechanical components and one (1) year warranty for electrical components from date of purchase. Wire/Synthetic ropes are not included under warranty.

Comeup Industries Inc.

Web site: www.comeupwinch.com

Tel: +886-2-2497-1788 Fax: +886-2-2497-1699 Email: info@comeup.com.tw
Address: No.139, Jieyukeng Rd., Ruifang Dist., New Taipei City 22453, Taiwan



Features Include

- Reliable electric winch for working and playing in off-road environments.
- 4,180 w/12V or 2,690 w/24V or 4,180 w /48V series wound motor.
- 10 equally positioned pin holes with an ergonomic T-handle make it possible to reposition in 36 degree Increments.
- Hardened steel, 3-stage planetary gear train for efficient and reliable operation
- Water-proof remote control with thermometric LED indicator alerts when the motor is over-heated.
- U.S. Germany, U.K. France, etc patented mechanical cone brake holds the full load without slipping.
- Submersible sealed contactor handles high amps and allows higher duty cycle.
- Meet international standards such as SAE J706, CE Machinery Directive 2006/42/EC and CE EMC directive 2014/30/EU

PN 857326 12V
PN 857431 24V
PN 857440 48V

Specifications

Rated line pull:	6,804 kg (15,000 lb) single line
Line speed (1st layer):	6.9 mpm / 22.6 fpm, 60A / 12V or 50A / 24V or 15A / 48V at no load 0.8 mpm / 2.5 fpm, 460A / 12V or 340A / 24V or 110A / 48V at full load
Motor:	4,180 w / 5.6 hp 12V series wound 2,690 w / 3.6 hp 24V series wound 4,180 w / 5.6 hp 48V series wound
Gear ratio:	3-stage planetary 315:1
Clutch (freespooling):	Rotating ring gear
Brake (outside the drum):	Automatic, full load cone brake
Winch construction:	Aluminum die cast housings with steel drum
Drum size:	89 x 206 L (3.5" x 8.1" L)
Control:	Weather proof remote with thermometric indicator LED and 5 m (17') cord
Wire rope:	Galvanized aircraft IWRC
Size:	11.1 mm x 27m (7/16" x 89')
Mounting bolts pattern:	254 x 114 mm (10" x 4.5") 254 x 165 mm (10" x 6.5")

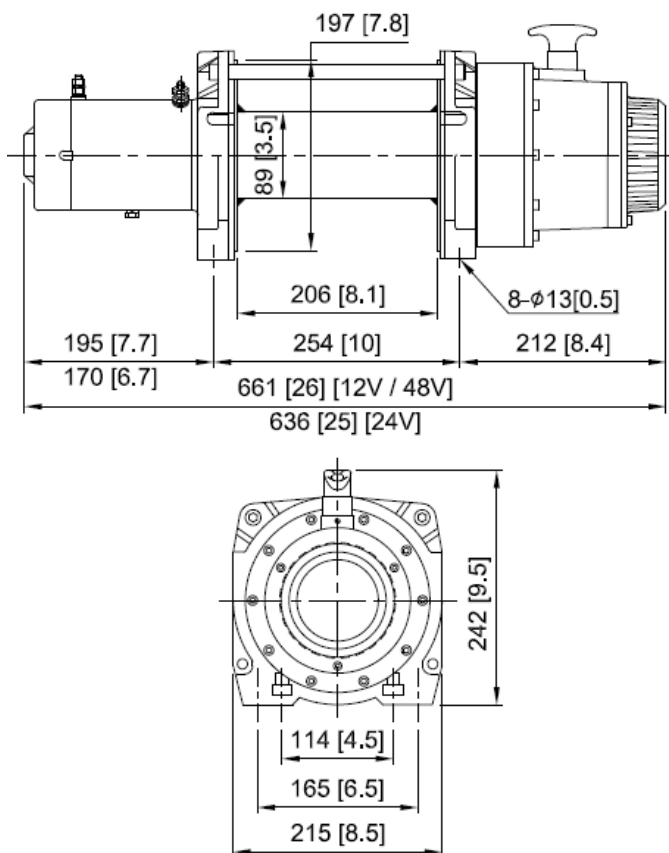
Comeup Industries Inc.

Web site: www.comeupwinch.com

Tel: +886-2-2497-1788 Fax: +886-2-2497-1699 Email: info@comeup.com.tw
 Address: No.139, Jieyukeng Rd., Ruifang Dist., New Taipei City 22453, Taiwan



Dimension in mm/in



Performance Data

Line Pull and Rope Capacity		
Layer of Wire Rope	Pull by Layer kg / lb	Total Rope on the Drum m / ft
1 st	6,804 / 15,000	5.7 / 18.6
2 nd	5,569 / 12,277	12.6 / 41.4
3 rd	4,713 / 10,391	20.8 / 68.3
4 th	4,086 / 9,007	27.0 / 89.0

Line Speed and Amp. Draw (1st layer of wire rope on the drum)					
Line Pull	Line Speed		Amp. Draw		
kg / lb	mpm	fpm	12V	24V	48V
No Load	6.9	22.6	60	50	15
1,814 / 4,000	1.6	5.4	180	90	30
3,629 / 8,000	1.2	3.8	280	190	65
4,536 / 10,000	1.0	3.3	330	220	75
5,443 / 12,000	0.9	2.9	385	260	85
6,804 / 15,000	0.8	2.5	460	340	110

Standard Accessories

- Roller fairlead
- Remote control w/ 5 m (17') cord
- Detachable control box
- Wire rope w/safety hook
- 1.8 m (6') 2 gauge battery lead
- Handsaver strap

Options Accessories

- Mounting channel
- Snatch block
- Winch accessory kit

Package

- Winch weight: 57 kg / 125.4 lb
- Gross weight: 69 kg / 152 lb
- Box dimension: 695 x 265 x 420 mm
(27.3" x 10.4" x 16.5")

Warning

- The winch is not intended to be used in any manner for the movement or lifting of personnel.
- The rated line pull shown is based on the first layer of rope on the drum.
- The rope winding on the drum shall remain 5 wraps from the drum.

Warranty

Limited lifetime warranty for mechanical components and one (1) year warranty for electrical components from date of purchase. Wire/Synthetic ropes are not included under warranty.

Comeup Industries Inc.

Web site: www.comeupwinch.com

Tel: +886-2-2497-1788 Fax: +886-2-2497-1699 Email: info@comeup.com.tw
Address: No.139, Jieyukeng Rd., Ruifang Dist., New Taipei City 22453, Taiwan

