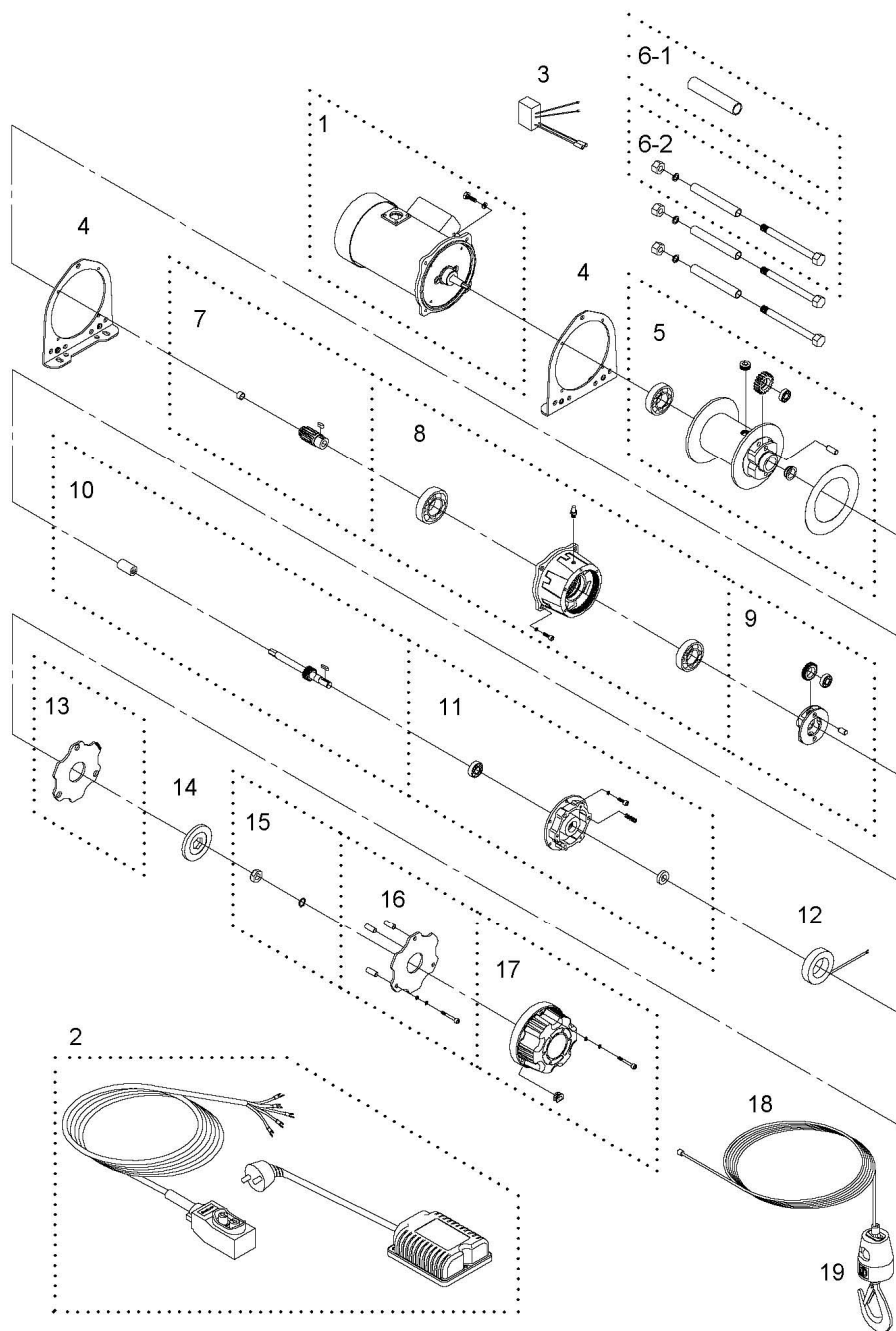


## Winch Assembly



Ver:4

**COMEUP**

## Electric Winch Model: **CP-200**

PN : 152363 220V50Hz 152222 220V50Hz

PN : 152349 230V50Hz 152456 240V50Hz

### Introduction

#### ► Feature

- Lifting capacity: 200 kg wire rope top layer
- Lifting height: 29 m
- Lifting speed: 10-15 m/min at 50Hz
- Brake: Electromagnetic spring-applied failsafe brake
- Control: Pendant switch powers the winch

#### ► Unpacking

- Winch assembly 1pc
- Wire rope 6 mm x 30 m 1pc
- Wire rope 5 mm x 45 m for PN :152222 1pc
- Weight hook CHW-0031 1pc
- Power lead 1.5 mm<sup>2</sup> x 3C x 3 m and plug 1pc
- Pendant switch w/cord 1.25 mm<sup>2</sup> x 5C x 3 m 1pc

#### ► Read this manual carefully

You should carefully read and understand this manual before operating it. Careless winch operation may result in personal injury hazards or property damage.

#### ► Information requesting or parts ordering

Please specify the followings information:

- Winch PN
- Serial number
- Part description
- Replacement part number
- Quantity for each part

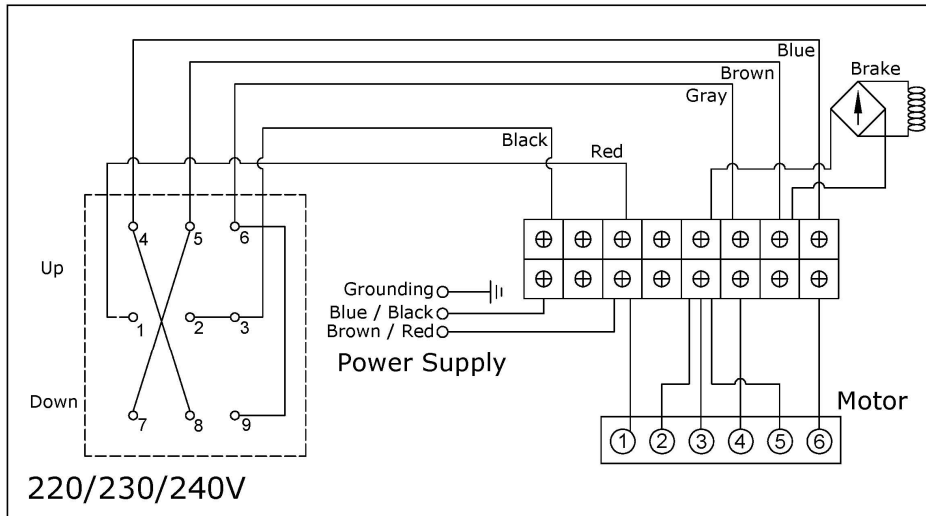
## Installation

Before using the winch, make sure all electrical components have no corrosion or damaged; the environment should be clear and dry.

### ► Performance

Winch Model			CP-200								
Motor		kw x p		0.6 x 4							
Recommend Wire Rope		Size (mm)		6							
		Breaking (kg)		2,010							
1 <sup>st</sup> Layer	Rated Load (kg)	50Hz	296	2 <sup>nd</sup> Layer	Rated Load (kg)	50Hz	264	3 <sup>rd</sup> Layer	Rated Load (kg)	50Hz	239
	Speed (m/min)	50Hz	10		Speed (m/min)	50Hz	11.3		Speed (m/min)	50Hz	12.5
	Rope-Winding Cumulating Sum (m)		5.4		Rope-Winding Cumulating Sum (m)		11.5		Rope-Winding Cumulating Sum (m)		18.3
4 <sup>th</sup> Layer	Rated Load (kg)	50Hz	218	5 <sup>th</sup> Layer	Rated Load (kg)	50Hz	200				
	Speed (m/min)	50Hz	13.8		Speed (m/min)	50Hz	15				
	Rope-Winding Cumulating Sum (m)		25.7		Rope-Winding Cumulating Sum (m)		30				

### ► Wiring Diagram



## Warning

- The winch is not intended to be used in any manner for the movement or lifting of personnel.
- The lifting capacity shown is based on the top layer of rope on the drum.
- The rope winding on the drum shall remain 5 wraps from the drum.

## Parts List

Item No.	Description	Part No.	Qty
1	Induction motor kit , 110/220V	880391	1
	Induction motor kit , 240V	880392	
	Induction motor kit , 230V	882540	
2	Control kit, 3 round pins	880398	1
3	Bridge rectifier	880368	1
4	Support bracket	880369	2
5	Drum kit	880370	1
6-1	Tie bar	881862	1
6-2	Tie bar kit	880371	3
7	2 <sup>nd</sup> shaft kit	880372	1
8	Gear box kit	880373	1
9	1 <sup>st</sup> stage carrier	880374	1
10	1 <sup>st</sup> shaft kit	881281	1
11	Conductor kit	880376	1
12	Brake coil 110V	880377	1
13	Conductor plate A	880403	1
14	Brake disc	880379	1
15	Hex socket	881282	1
16	Conductor plate B kit	880378	1
17	Brake cover	880382	1
18	Wire rope	880383	1
	Wire rope for PN:152222	881686	
19	Weight hook CHW-0031	880384	1