



Electric Winch

Model: CWG-30750

PN: w/5.5kw x 4P motor

150750 440V60Hz 157789 460V60Hz

159641 400V60Hz 150748 480V60Hz

Introduction

► Feature

Lifting capacity: 1,800 kg at 60Hz wire rope top layer

Lifting height: 97 m

Lifting speed: 4P: 8-15 m/min at 60Hz

Brake: Electromagnetic spring-applied failsafe brake

Control: Pendant switch powers the winch

► Unpacking

- Winch assembly 1pc
- Wire rope 16 mm x 100 m w/safety hook except for PN:159641 1pc
- Low voltage control ass'y LV-320 1pc
- Pendant switch PB-306 w/cord 1.25 mm² x 3C x 3 m 1pc

► Read this manual carefully

You should carefully read and understand this manual before operating it. Careless winch operation may result in personal injury hazards or property damage.

► Information requesting or parts ordering

Please specify the followings information:

- Winch PN
- Serial number
- Part description
- Replacement part number
- Quantity for each part

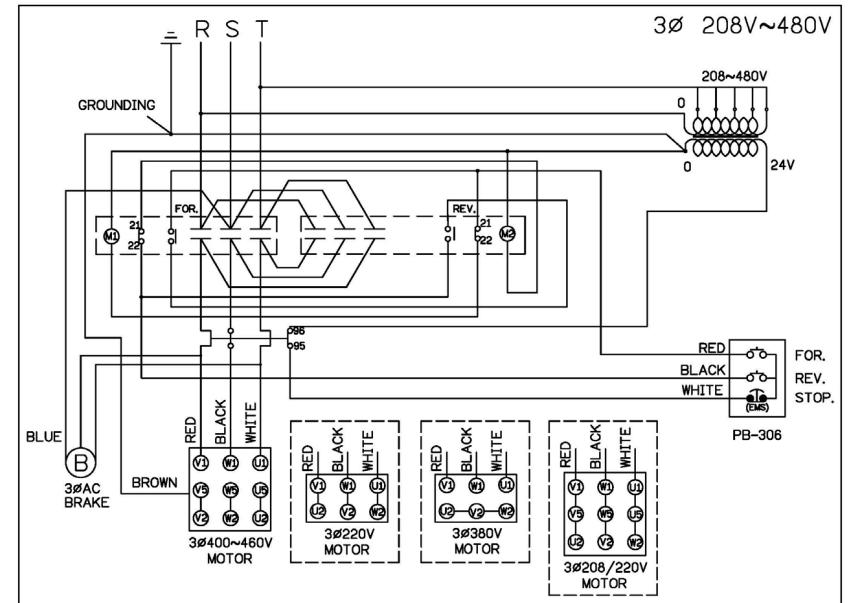
Installation

Before using the winch, make sure all electrical components have no corrosion or damaged; the environment should be clear and dry.

► Performance

Winch Model				CWG-30750							
Motor		kwxp		5.5 x 4							
Recommended Wire Rope		Size(mm)		16							
		Breaking (kg)		11,900							
1 st Layer	Rated Load (kg)	60Hz	3,300	2 nd Layer	Rated Load (kg)	60Hz	2,800	3 rd Layer	Rated Load (Kg)	60Hz	2,400
	Speed (m/min)	60Hz	8.0		Speed (m/min)	60Hz	9.7		Speed (M/min)	60Hz	11.1
Rope-Winding Cumulating Sum (m)			11	Rope-Winding Cumulating Sum (m)			24	Rope-Winding Cumulating Sum (m)			38
4 th Layer	Rated Load (kg)	60Hz	2,200	5 th Layer	Rated Load (kg)	60Hz	2,000	6 th Layer	Rated Load	60Hz	1,800
	Speed (m/min)	60Hz	12.5		Speed (m/min)	60Hz	13.9		Speed (m/min)	60Hz	15
Rope-Winding Cumulating Sum (m)			55	Rope-Winding Cumulating Sum (m)			73	Rope-Winding Cumulating Sum (m)			97

► Wiring Diagram



Warning

- The winch is not intended to be used in any manner for the movement or lifting of personnel.
- The lifting capacity shown is based on the top layer of rope on the drum.
- The rope winding on the drum shall remain 5 wraps from the drum.

Parts List

Item No.	Description	Part No.	Qty
1	Motor kit: 150750	882110	1
	Motor kit: 157789	882532	1
	Motor kit: 159641	883779	1
	Motor kit: 150748	881931	1
2	Motor support rack kit	880610	1
3	Drum kit	880611	1
4	Connect shaft kit	880612	1
5	Tie bar kit	880613	4
6	Gearbox support rack kit	880614	1
7	3 rd stage carrier kit	880616	1
8	2 nd stage carrier kit	880618	1
9	2 nd & 3 rd ring gear kit	880619	1
10	Fix plate kit	880620	1
11	1 st stage carrier kit	880622	1
12	1 st ring gear kit	880623	1
13	1 st shaft kit	880624	1
14	Brake base kit	881638	1
15	Brake kit: 440V	881643	1
	Brake kit: 460V	882533	1
	Brake kit: 400V	881641	1
	Brake kit: 480V	883378	1
15-1	Brake disc	880626	2
15-2	Brake coil: 440V	880650	1
	Brake coil: 460V	882534	1
	Brake coil: 400V	881450	1
	Brake coil: 480V	883379	1
16	Brake rear cover kit	880627	1
17	Wire rope w/hook	880628	1
18	Low voltage control ass'y LV-320: 440V	882109	1
	Low voltage control ass'y LV-320: 460V	882531	1
	Low voltage control ass'y LV-320: 400V	883778	1
	Low voltage control ass'y LV-320: 480V	881932	1
18-1	Remote control,PB-306	881048	1
19	Base plate kit	881637	1

Winch Assembly

