

### Introduction

#### ► Feature

- Line pull: 4,535 kg / 10,000 lb wire rope first layer
- Wire rope: 9.5 mm × 26 m (3/8" x 85.3') galvanized aircraft A7 × 19
- Brake: Exclusive brake design with No. 37C device
- Clutch: Turn the mechanism lever for rapid wire rope payout
- Control: Handheld pendant switch powers the winch

#### ► Unpacking

- Winch assembly.....1 pc
- Control box.....1 pc
- Remote control.....1 pc
- Wire rope with Clevis hook.....1 pc
- Roller fairlead.....1 pc
- 1.8 m (6') 2 gauge battery lead.....1 pc

#### ► Read this manual carefully

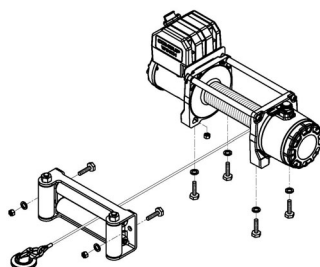
You should carefully read and understand this manual before operating it. Careless winch operation may result in personal injury hazards or property damage.

### Installation

Before using the winch, make sure all electrical components have no corrosion or damaged; the environment should be clear and dry.

#### ► Winch and roller fairlead mountings

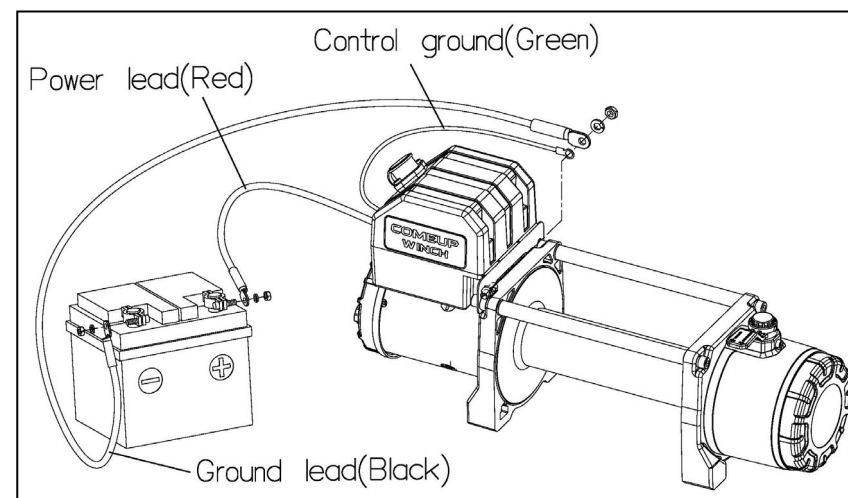
- It is very important that the winch will be mounted on a flat and hard surface of mounting channel in order to make sure the motor, drum and gearbox housing are aligned correctly.



- Roller fairlead does not mount to the winch directly.
- The wire rope shall be wound in an under-wound orientation only.
- Four (4) M10 x 1.50 pitch 8.8 grade with 44 N-m torque settings (maximum) high tensile steel bolts must be used in order to sustain the loads imposed on the winch mounting.
- Two (2) M10 x 1.50 pitch 8.8 grade with 44 N-m torque settings (maximum) high tensile steel bolts must be used for fastening the roller fairlead into the mounting channel.

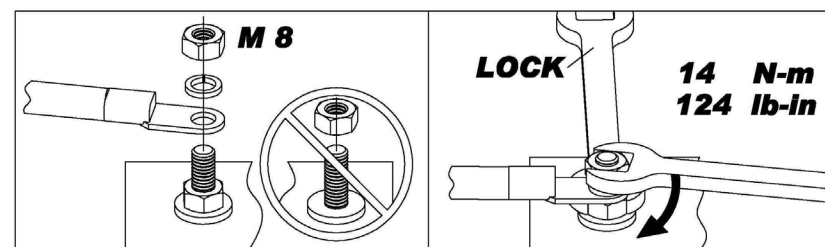
#### ► Wiring Diagram

- Connect control ground to the motor.
- Attach the ground lead firmly to the negative (–) battery terminal and power lead to the positive (+) battery terminal. The voltage drop for the winch motor must not exceed 10% of the nominal voltage of 12V DC.



#### ► Nut fastening for motor & contactor

1. Holding the lower nut on the stub and fastening the upper nut clockwise.
2. The torque setting for nut is 14 N-m/124 lb-in.



## **Warning**

- The winch is not intended to be used in any manner for the movement or lifting of personnel.
- The rated line pull shown is based on the first layer of rope on the drum.
- The rope winding on the drum shall remain 5 wraps from the drum.

## **Parts List**

Item No.	Description	Part No.	Qty
1	Waterproof motor w/housing 12V	883202	1
2	Tie bar kit	883641	2
3	Brake clutch base kit	883206	1
4	Drum bushing	880006	2
5	Drum kit	883207	1
6	Cone brake disc kit	883208	1
7	Gearbox support rack	883209	1
8	Grounding lead	883210	1
9	Wire rope	883212	1
10	1 <sup>st</sup> shaft	883214	1
11	ring gear kit	883215	1
12	3 <sup>rd</sup> stage carrier	883216	1
13	2 <sup>nd</sup> stage carrier	883217	1
14	1 <sup>st</sup> stage carrier	883218	1
15	1 <sup>st</sup> pinion	883219	1
16	Clutch kit	883220	1
17	Gear box kit	883221	1
18	Roller fairlead	883222	1
19	Mounting hardware	883223	1
20	Remote control	880025	1
21	Handsaver strap	880026	1
22	Control box 12V	883637	1
22-1	Remote socket kit	883235	1
22-2	Control pack 12V	883639	1
23	Clevis hook	881995	1

## **Winch Assembly**

