



Electric Winch

Model: **CWG-500TH**

PN:155510 380V50Hz 155520 400V50Hz
155580 415V50Hz 155540 440V50Hz

Introduction

► Feature

- Lifting capacity: 500 kg wire rope top layer
- Lifting height: 127 m
- Lifting speed: 19-34 m/min at 50Hz
- Brake: Electromagnetic spring-applied failsafe brake
- Control: Pendant switch powers the winch

► Unpacking

- Winch assembly 1pc
- Wire rope 8 mm x 130 m w/hook 1pc
- Low voltage control ass'y LV-320 1pc
- Pendant switch PB-306 w/cord 1.25 mm² x 3C x 3 m 1pc

► Read this manual carefully

You should carefully read and understand this manual before operating it. Careless winch operation may result in personal injury hazards or property damage.

► Information requesting or parts ordering

Please specify the followings information:

- Winch PN
- Serial number
- Part description
- Replacement part number
- Quantity for each part

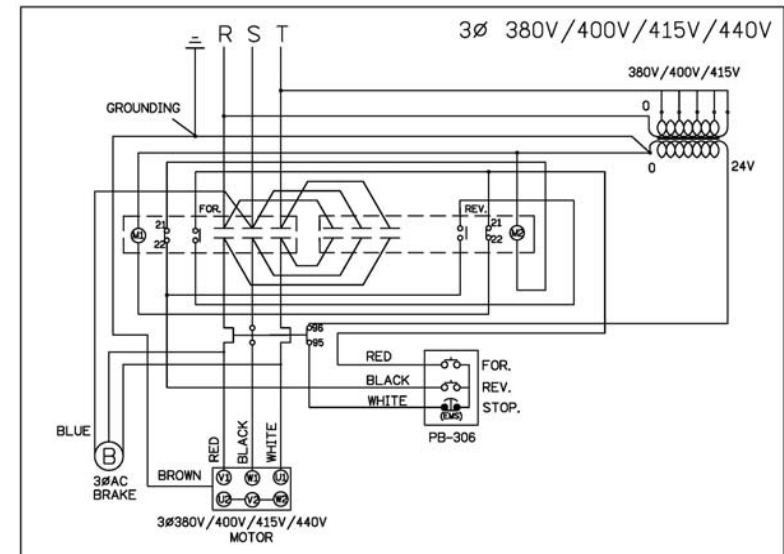
Installation

Before using the winch, make sure all electrical components have no corrosion or damaged; the environment should be clear and dry.

► Performance

Winch Model		CWG-500TH									
Motor	kw x p	3.7 x 2									
Recommend Wire Rope	Size (mm)	8									
	Breaking (kg)	2,970									
1 st Layer	Rated Load (kg)	50Hz	893	2 nd Layer	Rated Load (kg)	50Hz	789	3 rd Layer	Rated Load (kg)	50Hz	707
	Speed (m/min)	50Hz	19		Speed (m/min)	50Hz	22		Speed (m/min)	50Hz	24
	Rope-Winding Cumulating Sum (m)		14		Rope-Winding Cumulating Sum (m)		30		Rope-Winding Cumulating Sum (m)		48
4 th Layer	Rated Load (kg)	50Hz	641	5 th Layer	Rated Load (kg)	50Hz	586	6 rd Layer	Rated Load (kg)	50Hz	540
	Speed (m/min)	50Hz	27		Speed (m/min)	50Hz	29		Speed (m/min)	50Hz	32
	Rope-Winding Cumulating Sum (m)		67		Rope-Winding Cumulating Sum (m)		89		Rope-Winding Cumulating Sum (m)		112
7 rd Layer	Rated Load (kg)	50Hz	500								
	Speed (m/min)	50Hz	34								
	Rope-Winding Cumulating Sum (m)		130								

► Wiring Diagram



Warning

- The winch is not intended to be used in any manner for the movement or lifting of personnel.
- The lifting capacity shown is based on the top layer of rope on the drum.
- The rope winding on the drum shall remain 5 wraps from the drum.

Parts List

Item No.	Description	Part No.	Qty
1	Induction motor kit 380V	881734	1
	Induction motor kit 400V	881956	1
	Induction motor kit 415V	882059	1
	Induction motor kit 440V	882993	1
2	Motor support rack kit	881031	1
3	Drum kit	881735	1
4	Connect shaft kit	881736	1
5	Tie bar kit	881737	2
6	Gearbox support rack kit	881035	1
7	2 nd stage carrier kit	880907	1
8	1 st stage carrier kit	880909	1
9	Gear box kit	880910	1
10	1 st shaft kit	880911	1
11	Gearbox rear cover kit	881738	1
12	Brake kit 380V	881745	1
	Brake kit 400V	881957	1
	Brake kit 415V	882060	1
	Brake kit 440V	882994	1
12-1	Brake disc	880751	1
12-2	Brake coil 380V	880769	1
	Brake coil 400V	881364	1
	Brake coil 415V	882061	1
	Brake coil 440V	882995	1
13	Brake rear cover kit	880752	1
14	Wire rope w/hook 8 mm x 130 m	881740	1
15	Low voltage control ass'y LV-320, 380V	881821	1
	Low voltage control ass'y LV-320, 400V	881822	1
	Low voltage control ass'y LV-320, 415V	881823	1
	Low voltage control ass'y LV-320, 440V	882676	1
15-1	Remote control, PB-306	881048	1
16	Base plate kit	881741	1

Winch Assembly

