



# Electric Winch

## Model: CWG-30075

PN : 152005 200V50Hz 153220 220V50Hz 150508 380V50Hz  
153040 400V50Hz 153415 415V50Hz 154408 440V60Hz

### Introduction

#### ► Feature

- Lifting capacity: 300 kg wire rope top layer
- Lifting height: 29 m
- Lifting speed: 10-15 m/min at 50Hz ; 12-18 m/min at 60Hz
- Brake: Electromagnetic spring-applied failsafe brake
- Control: Pendant switch powers the winch

#### ► Unpacking

- Winch assembly 1pc
- Wire rope 6 mm x 30 m 1pc
- Weight hook CHW-0031 1pc
- Pendant switch w/cord 1.25 mm<sup>2</sup> x 5C x 3 m 1pc

#### ► Read this manual carefully

You should carefully read and understand this manual before operating it. Careless winch operation may result in personal injury hazards or property damage.

#### ► Information requesting or parts ordering

Please specify the followings information:

- Winch PN
- Serial number
- Part description
- Replacement part number
- Quantity for each part

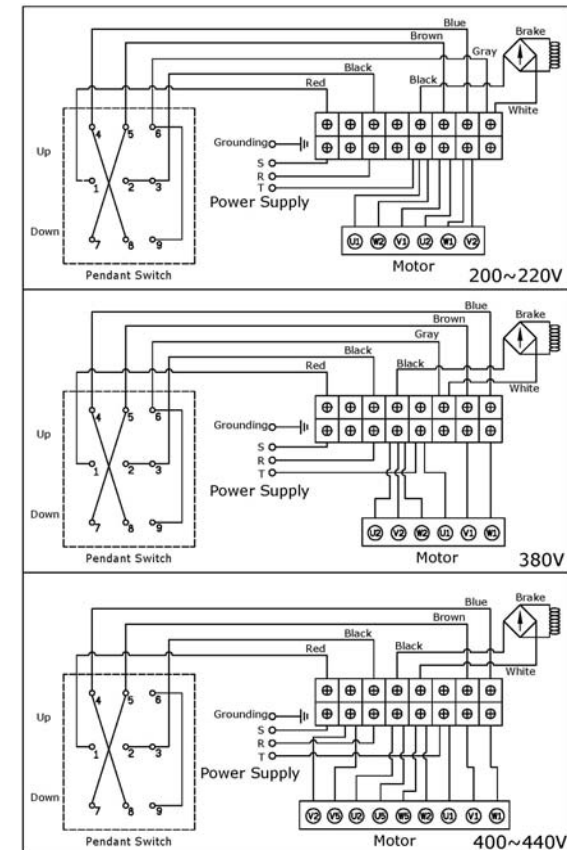
### Installation

Before using the winch, make sure all electrical components have no corrosion or damaged; the environment should be clear and dry.

#### ► Performance

| Winch Model                     |                 |               |      | CWG-30075                       |                 |      |      |                                 |                 |      |      |
|---------------------------------|-----------------|---------------|------|---------------------------------|-----------------|------|------|---------------------------------|-----------------|------|------|
| Motor                           |                 | kw x p        |      | 0.75 x 4                        |                 |      |      |                                 |                 |      |      |
| Recommend Wire Rope             |                 | Size (mm)     |      | 6                               |                 |      |      |                                 |                 |      |      |
|                                 |                 | Breaking (kg) |      | 2,010                           |                 |      |      |                                 |                 |      |      |
| 1 <sup>st</sup> Layer           | Rated Load (kg) | 50Hz          | 444  | 2 <sup>nd</sup> Layer           | Rated Load (kg) | 50Hz | 396  | 3 <sup>rd</sup> Layer           | Rated Load (kg) | 50Hz | 358  |
|                                 |                 | 60Hz          |      |                                 |                 | 60Hz |      |                                 |                 | 60Hz |      |
|                                 | Speed (m/min)   | 50Hz          | 10.0 |                                 | Speed (m/min)   | 50Hz | 11.3 |                                 | Speed (m/min)   | 50Hz | 12.5 |
|                                 |                 | 60Hz          | 12.0 |                                 |                 | 60Hz | 13.6 |                                 |                 | 60Hz | 15.1 |
| Rope-Winding Cumulating Sum (m) |                 |               | 5.4  | Rope-Winding Cumulating Sum (m) |                 |      | 11.5 | Rope-Winding Cumulating Sum (m) |                 |      | 18.3 |
| 4 <sup>th</sup> Layer           | Rated Load (kg) | 50Hz          | 327  | 5 <sup>th</sup> Layer           | Rated Load (kg) | 50Hz | 300  |                                 |                 |      |      |
|                                 |                 | 60Hz          |      |                                 |                 | 60Hz |      |                                 |                 |      |      |
|                                 | Speed (m/min)   | 50Hz          | 13.8 |                                 | Speed (m/min)   | 50Hz | 15.0 |                                 |                 |      |      |
|                                 |                 | 60Hz          | 16.5 |                                 |                 | 60Hz | 18.0 |                                 |                 |      |      |
| Rope-Winding Cumulating Sum (m) |                 |               | 25.7 | Rope-Winding Cumulating Sum (m) |                 |      | 30   |                                 |                 |      |      |

#### ► Wiring Diagram



## Warning

- The winch is not intended to be used in any manner for the movement or lifting of personnel.
- The lifting capacity shown is based on the top layer of rope on the drum.
- The rope winding on the drum shall remain 5 wraps from the drum.

## Parts List

| Item No. | Description                    | Part No. | Qty |
|----------|--------------------------------|----------|-----|
| 1        | Induction motor kit , 220/380V | 881689   | 1   |
|          | Induction motor kit , 400/415V | 881690   |     |
|          | Induction motor kit , 440V     | 882089   |     |
|          | Induction motor kit , 200V     | 883763   |     |
| 2        | Control kit, 200/220V          | 881691   | 1   |
|          | Control kit, 380/400/415V      | 881692   |     |
| 3        | Bridge rectifier               | 880368   | 1   |
| 4        | Support bracket                | 880369   | 2   |
| 5        | Drum kit                       | 880370   | 1   |
| 6-1      | Tie bar                        | 881862   | 1   |
| 6-2      | Tie bar kit                    | 880371   | 3   |
| 7        | 2 <sup>nd</sup> shaft kit      | 880372   | 1   |
| 8        | Gear box kit                   | 880373   | 1   |
| 9        | 1 <sup>st</sup> stage carrier  | 880374   | 1   |
| 10       | 1 <sup>st</sup> shaft kit      | 880375   | 1   |
| 11       | Conductor kit                  | 880376   | 1   |
| 12       | Brake coil                     | 880388   | 1   |
| 13       | Conductor plate A              | 880403   | 2   |
| 14       | Brake disc                     | 880379   | 2   |
| 15       | Hex socket                     | 880380   | 1   |
| 16       | Conductor plate B kit          | 880381   | 1   |
| 17       | Brake cover                    | 880382   | 1   |
| 18       | Wire rope                      | 880383   | 1   |
| 19       | Weight hook CHW-0031           | 880384   | 1   |

## Winch Assembly

