

Electric Winch

Model: **CWG-34000**

P/N: w/7.5 kw x 6P motor
152799 380V/50Hz

P/N: w/11 kw x 4P motor
150020 380V/50Hz 153482 380V/50Hz
150025 380V/50Hz 150030 400V/50Hz
157522 415V/50Hz

Introduction

► Feature

- Lifting capacity 5,000 kg at 50Hz wire rope top layer
- Lifting height 192 m
- Lifting speed 4P: 8-12.2 m/min at 50Hz ; 6P: 5.3-8 m/min at 50Hz
- Brake Electromagnetic spring-applied failsafe brake
- Control Pendant switch powers the winch

► Unpacking

- Winch assembly 1pc
- Wire rope 22.4 mm x 200 m w/safety hook for PN:153482,157522,152799 1pc
- Wire rope 22.4 mm x 70 m w/safety hook for PN:150030 1pc
- Wire rope 20 mm x 250 m w/safety hook for PN:150020 1pc
- Low voltage control ass'y LV-360 1pc
- Pendant switch CPB-161 w/cord 1.25 mm² x 3C x 3 m 1pc

► Read this manual carefully

You should carefully read and understand this manual carefully before operating it. Careless winch operation may result in personal injury hazards or property damage.

► Information requesting or parts ordering

Please specify the followings information:

- Winch part number
- Part description
- Quantity for each part
- Serial number
- Replacement part number

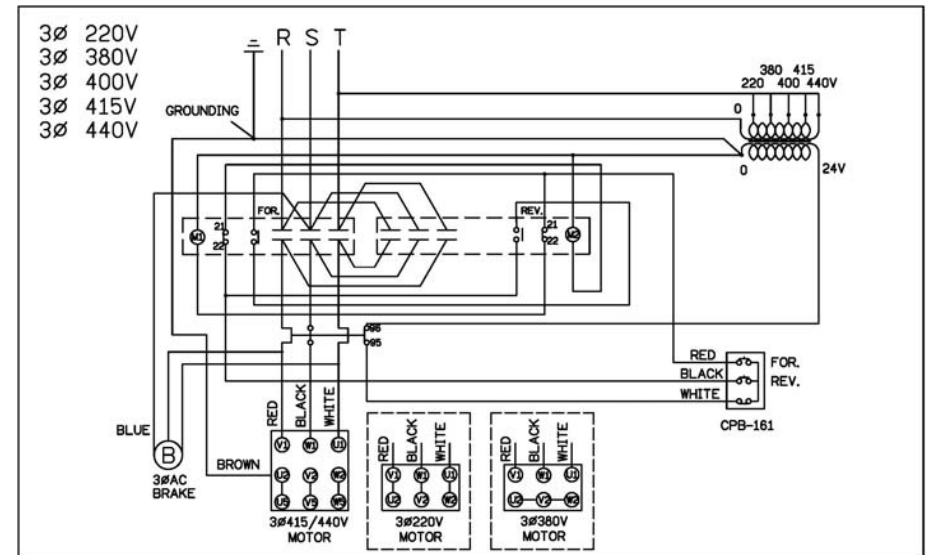
Installation

Before using the winch, make sure all electrical components have no corrosion or damaged; the environment should be clear and dry.

► Performance

Winch Model		CWG-34000												
Motor	kw x p	11 x 4					7.5 x 6							
Recommend Wire Rope	Size(mm)	22.4												
	Breaking (kg)	23,300												
1 st Layer	Rated Load (kg)	50Hz		7,587	Rated Load (kg)		50Hz		6,718	Rated Load (kg)		50Hz		6,028
		60Hz		6,069	60Hz		5,374	60Hz		4,822	60Hz		4,822	
	Speed (m/min)	50Hz	4P	8	2 nd Layer	Speed (m/min)	50Hz	4P	9.1	3 rd Layer	Speed (M/min)	50Hz	4P	10.1
			6P	5.3				6P	5.9				6P	6.6
		60Hz	4P	9.6	60Hz	4P	10.9	60Hz	4P	12.1	60Hz	4P	12.1	
			6P	6.3		6P	7.1		6P	7.9				
Rope-Winding Cumulating Sum (m)				32	Rope-Winding Cumulating Sum (m)				68	Rope-Winding Cumulating Sum (m)				108
4 th Layer	Rated Load (kg)	50Hz		5,466	Rated Load (kg)		50Hz		5,000					
		60Hz		4,373	60Hz		4,000							
	Speed (m/min)	50Hz	4P	11.1	5 th Layer	Speed (m/min)	50Hz	4P	12.2					
			6P	7.3				6P	8					
		60Hz	4P	13.4	60Hz	4P	14.6							
			6P	8.8		6P	9.6							
Rope-Winding Cumulating Sum (m)				153	Rope-Winding Cumulating Sum (m)				200					

► Wiring Diagram



Warning

- The winch is not intended to be used in any manner for the movement or lifting of personnel.
- The lifting capacity shown is based on the top layer of rope on the drum.
- The rope winding on the drum shall remain 5 wraps from the drum.

Parts List

Item No.	Description	Part No.	Qty
1	Motor kit	As arranged	1
2	Motor support rack kit	880688	1
3	Drum kit	880689	1
4	Connect shaft kit	880690	1
5	Tie bar kit	880691	4
6	Gearbox support rack kit	880692	1
7	3 rd stage carrier kit	881623	1
8	2 nd stage carrier kit	881624	1
9	3 rd ring gear kit	880697	1
10	Fix plate kit	880698	1
11	1 st stage carrier kit	881625	1
12	1 st & 2 nd ring gear kit	880664	1
13	1 st shaft kit	880700	1
14	Brake base kit	880701	1
15	Brake kit	As arranged	1
15-1	Brake disc	880702	2
15-2	Brake coil	As arranged	1
16	Brake rear cover kit	880703	1
17	Wire rope w/hook 22.4 mm x 200 m	880704	1
	Wire rope w/hook 20 mm x 250 m	881628	
	Wire rope w/hook 22.4 mm x 70 m	881629	
18	Low voltage control ass'y LV-360	As arranged	1
18-1	Remote control,CPB-161	881047	1
19	Base plate kit	880706	1

Part No. configurations:

Cycle	Voltage	kw x p	Motor
50 Hz	380 V	11 x 4	880709
50 Hz	400 V	11 x 4	881622
50 Hz	415 V	11 x 4	880710
50Hz	380V	7.5 x 6	883777

Cycle	Voltage	Brake kit	Brake coil	LV-360
50 Hz	380 V	880716	880720	881844
50 Hz	400 V	881626	881627	881845
50 Hz	415 V	880717	880721	881846

Standard Value for brake coil (50Hz):

Voltage	220V	380V	415V	440V
Black & Blue wires	9Ω	27Ω	34Ω	41Ω
Black & Red wires	4Ω	17Ω	18Ω	18Ω
Red & Blue wires	5Ω	15Ω	19Ω	23Ω

Winch Assembly

