



Electric Winch

Model: **CWG-10077**

PN: 150658 240V50Hz

Introduction

► Feature

- Lifting capacity: 300 kg wire rope top layer
- Lifting height: 54 m for standard 6 mm x 55 m rope
- Lifting speed: 12-19 m/min at 50Hz
- Brake: Electromagnetic spring-applied failsafe brake
- Control: Pendant switch powers the winch

► Unpacking

- Winch assembly 1pc
- Wire rope 6 mm x 55 m 1pc
- Weight hook CHW-0031 1pc
- Low voltage control ass'y LV-320 1pc
- Pendant switch PB-306 w/cord 1.25 mm² x 3C x 3 m 1pc

► Read this manual carefully

You should carefully read and understand this manual before operating it. Careless winch operation may result in personal injury hazards or property damage.

► Information requesting or parts ordering

Please specify the followings information:

- Winch PN
- Serial number
- Part description
- Replacement part number
- Quantity for each part

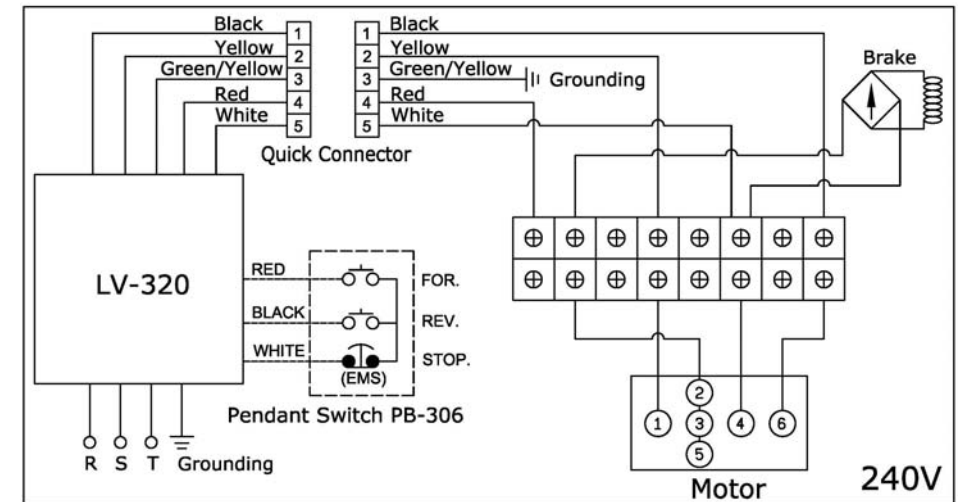
Installation

Before using the winch, make sure all electrical components have no corrosion or damaged; the environment should be clear and dry.

► Performance

Winch Model				CWG-10077							
Motor	hp x p			1.5 x 4							
Recommend Wire Rope	Size(mm)			6							
	Breaking (kg)			2,010							
1 st Layer	Rated Load (kg)	50Hz	467	2 nd Layer	Rated Load (kg)	50Hz	420	3 rd Layer	Rated Load (kg)	50Hz	382
	Speed (m/min)	50Hz	12		Speed (m/min)	50Hz	13.5		Speed (m/min)	50Hz	14.9
	Rope-Winding Cumulating Sum (m)				8.1	Rope-Winding Cumulating Sum (m)			17.2	Rope-Winding Cumulating Sum (m)	
4 th Layer	Rated Load (kg)	50Hz	350	5 th Layer	Rated Load (kg)	50Hz	323	6 th Layer	Rated Load (kg)	50Hz	300
	Speed (m/min)	50Hz	16.2		Speed (m/min)	50Hz	17.6		Speed (m/min)	50Hz	19
	Rope-Winding Cumulating Sum (m)				38	Rope-Winding Cumulating Sum (m)			50	Rope-Winding Cumulating Sum (m)	

► Wiring Diagram



Warning

- The winch is not intended to be used in any manner for the movement or lifting of personnel.
- The lifting capacity shown is based on the top layer of rope on the drum.
- The rope winding on the drum shall remain 5 wraps from the drum.

Parts List

Item No.	Description	Part No.	Qty
1	Induction motor kit	880796	1
2	Low voltage control ass'y LV-320	881839	1
2-1	Remote control, PB-306	881048	1
3	Bridge rectifier	880368	1
4	Support bracket	880776	2
5	Drum kit	880777	1
6-1	Tie bar	881863	1
6-2	Tie bar kit	880778	3
7	2 nd shaft kit	880781	1
8	Gear box kit	880782	1
9	1 st stage carrier kit	880783	1
10	1 st shaft kit	880784	1
11	Conductor kit	880785	1
12	Brake coil	880786	1
13	Conductor plate A	880787	2
14	Brake disc	880379	2
15	Hex socket	880790	1
16	Conductor plate A kit	880788	1
17	Brake cover kit	880792	1
18	Wire rope 6 mmx 55 m	881633	1
19	Weight hook, CHW-0031	880384	1

Winch Assembly

